



Classic Channel Regatta



Dartmouth - St Peter Port - Lézardrieux - Paimpol

SAILING INSTRUCTIONS

Tuesday 7 July - Thursday 16 July 2026

PREAMBLE

These sailing instructions (SIs) are divided into five sections:

- Section 1: Applies to all racing and to the prize giving on 16 July
- Section 2: Begins at SI18 applies to racing in the Dartmouth Classics on 8-9 July
- Section 3: Begins at SI28 applies to the Classic Channel Race 10-11 July
- Section 4: Begins at SI38 applies to the Classic Channel Race from St Peter Port to Lézardrieux 12 July
- Section 5: Begins at SI48 applies to the Classic Tour de l'Île de Bréhat 15 July

OFFICIAL TIME

Times specified in section 1 are British Summer Time (BST) except that the times for the prizegiving in France are French Summer Time (BST + 1 hour).

Times specified in Sections 2, 3 & 4 are BST.

Times specified in Section 5 are French Summer Time.

COORDINATES OF MARKS, OBSTRUCTIONS, ETC.

All latitude and longitude coordinates are to be regarded as approximate.

ABBREVIATIONS

[NP] - a breach of this rule will not be grounds for protest by a boat (this changes RRS 60.1)

[DP] - The notation '[DP]' in a rule means that the penalty for a breach of the rule may, at the discretion of the protest committee, be less than disqualification

RDYC - Royal Dart Yacht Club

GYC - Guernsey Yacht Club

LCC - Loguivy Canot Club, Paimpol

PMP - Maison des Plaisancier, Paimpol

REFERENCE WEBSITES

Classic Channel Regatta website: <https://www.classic-channel-regatta.eu/>

Racing Rules of Sailing 2025-2028: <https://www.sailing.org/racingrules/>

World Sailing Offshore Special Regulations: <https://www.sailing.org/inside-world-sailing/rules-regulations/offshore-special-regulations/>

SECTION 1 - APPLIES TO ALL RACING

1. RULES
 1. This event is governed by the rules as defined in the Racing Rules of Sailing (RRS).
 2. RRS60.4(a)(2) is changed as follows:

“if it alleges a breach of a rule of Part 2 or rule 31 and is from a boat that was not involved in, and did not see, the incident, or”
 3. Rules specific to each race are detailed in the relevant section.
 4. Other rules are defined in the Notice of Race (NoR).
2. NOTICES TO COMPETITORS
 - 2.1. Notices to competitors will be posted on the official notice board at: www.classic-channel-regatta.eu/racing/noticeboard/ and on the skippers' Whatsapp group.
 - 2.2. Access to the skippers' Whatsapp group is controlled by the race committee (see NoR 3.2); skippers are advised to check that they are in the skippers' Whatsapp group at registration.
 - 2.3. The distribution of yachts from classes into groups will depend on their JCH time correction factor. A list of the yachts and their groups will be displayed on the official notice board and in the skippers' Whatsapp group by 1800 hrs on 7 July.
 - 2.4. [NP] On the water, the race committee intends to monitor and communicate with competitors on VHF Ch72. Boats shall monitor Ch72 at all times when racing. Failure to receive broadcasts will not be grounds for redress (this changes RRS 61.1(a)).
 - 2.5. All starting, postponement, abandonment, shortening and recall signals, the course to be sailed and the count down, will, where possible, be broadcast by the race committee on VHF Ch72. Failure to make a broadcast or to time it accurately, shall not be grounds for a request for redress (this changes RRS 61.1(a)).
 - 2.6. Changes to finishing window times and the time of the first boat in a group to finish may be broadcast by the race committee on VHF Ch72.
 - 2.7. [DP] While racing, from the first warning signal until the end of the last race of the day, except in an emergency, a boat shall not make voice or data transmissions and shall not receive voice or data communications that are not available to all boats.
 - 2.8. The race committee may use email and the skippers' Whatsapp group to alert competitors to notices being posted.
3. CHANGES TO SAILING INSTRUCTIONS
 - 3.1. Any change to the SIs will be posted before 0800 hrs on the day it will take effect, except that any change to the schedule of races will be posted by 2000 hrs on the day before it will take effect.
 - 3.2. [NP] Changes on the water will be broadcast on VHF Ch72. Failure to receive such broadcasts will not be grounds for redress (this change RRS61.1(a)).
4. SIGNALS MADE ASHORE
 - 4.1. When flag “AP” is displayed ashore, “1 minute” is replaced with “not less than 75 minutes” in the race signal AP.
 - 4.2. When flag Y is displayed ashore, RRS 40 applies at all times when afloat until further notice.
5. CODE OF CONDUCT
 - 5.1. [DP] Competitors and support persons shall comply with reasonable requests from race officials.

- 5.2. [DP] Competitors and support persons shall handle any equipment or place advertising provided by the organizing authority in accordance with any instructions for its use and without interfering with its functionality.
6. SCHEDULE OF RACES
- 6.1. Skippers' briefings will take place as shown in the relevant sections of these SIs. One member of each crew may attend.
- 6.2. Racing is scheduled as follows:
- 6.2.1. The Dartmouth Classics Day 1 (8 July) - racing on triangle courses
- 6.2.2. The Dartmouth Classics Day 2 (9 July) - Bay Race using navigational and other race marks in Start Bay
- 6.2.3.
- 6.2.4. The Classic Channel Race from Dartmouth to St Peter Port (10-11 July)
- 6.2.5. The Classic St Peter Port to Lézardrieux Race (12 July)
- 6.2.6. The Classic Tour de l'Île de Bréhat (15 July) using navigational and other race marks
- 6.3. Races not completed will not be resailed.
7. CLASS (GROUP) FLAGS
- 7.1. Depending on the JCH time correction factors and the number of entries received, boats entered in classes may be redistributed into groups as follows:
- 7.2. [DP] Boats racing shall display a group numeral pennant as follows

Group	Numeral pennant
A	6
B	7
C	8
D	9
E	Not required

Class	Group
1	Group A or Group B
2	Group A or Group B
3	Group C or Group D
4	Group C or Group D
Squibs	Group E

- 7.3. [NP] Where required by 7.2 boats shall display their group numeral pennant from the backstay at a height of approximately 1.5m above the gunwale.
- 7.4. [DP] In the absence of a backstay, the pennant shall be displayed on the afterpart of the boat in an easily visible location.
8. [DP] OBSTRUCTIONS
- 8.1. Commercial and military shipping underway and constricted in their ability to manoeuvre are designated as moving exclusion zones extending to 100m on all sides of the vessel and any accompanying tugs, escort vessels and pilot vessels. No boat shall enter the exclusion zone and, if becalmed, may use any means of propulsion to move out of the way. This should only be sufficient to leave the exclusion zone by the safest possible route and offer the competitor no significant advantage in the race.
- 8.2. Divers' exclusion zones extend 25m around any dive vessel displaying code flag "A", an inflated orange buoy marking a diver under the surface and a diver on the surface. Boats shall not enter the 25m zone.
9. THE START
- Advisory note: boats are reminded that World Sailing Development Rule DR21-01 will be in force for all starts; see NoR 1.2, 1.3 and 1.4 for details.
- 9.1. The race committee signal vessel will describe its approximate position on VHF Ch72 approximately 30 minutes before the first scheduled warning signal.
- 9.2. A starting inner limit mark (ILM) may be placed off the race committee signal vessel. The ILM will not necessarily lie on the start line.
- 9.3. [NP][DP] If an ILM is in place, no boat after its preparatory signal shall enter the triangle formed by the bow of the race committee signal vessel on station, the ILM and the stern of the same vessel. The race committee will protest boats breaching this rule.
- 9.4. On arrival in the starting area, in order to enable their group pennant and sail number to be verified against the entry list, boats shall pass close to the stern of the committee boat.
- 9.5. For the first group start, an attention signal (orange flag with one sound signal) will be made five minutes before the warning signal. The race committee will designate the course to be sailed before or at the attention signal.
- 9.6. Visual signals may be displayed (this changes RRS 26).
- 9.7. [NP] After her warning signal, no boat entirely on the course side of the starting line shall cross it in the direction from the course to the pre-start side. The penalty for infringement of this rule will be disqualification without a hearing.
- 9.8. [DP] Boats whose warning signal has not been made shall avoid the starting area during the starting sequence of other races.
- 9.9. A boat starting later than four minutes after her starting signal will be scored Did Not Start without a hearing (this changes RRS A5.1 and A5.3).
- 9.10. In the event of a general recall, the warning signal for the next class to start will be removed and then re-displayed with the next starting signal of the recalled class (this changes RRS 27.3).
10. TIME LIMITS
- 10.1. Time limits are specified in the relevant sections of these SIs.
- 10.2. The Finishing Window is the time for boats to finish after the first boat in that group sails the course and finishes. Boats starting but failing to sail the course within the finishing window

and not subsequently retiring, being penalised or given redress, will be scored Time Limit Expired (TLE) without a hearing. A boat scored TLE shall be scored points one more than the finishing place of the last boat that sailed the course within the Finishing Window and did not subsequently retire or was not disqualified (this changes RRS 35, A5.1, A5.3 and A10)

11. PENALTY SYSTEM

11.1. For all groups, RRS 44.1 is changed so that the two-turns penalty is replaced by a one-turn penalty

12. HEARING REQUESTS

12.1. Boats shall display a red flag irrespective of their length. This changes RRS 60.2(a)(1).

12.2. Adding to the provisions of RRS 60.2, boats intending to lodge a protest shall notify the race committee on VHF Ch72

12.3. Hearing request forms are available as shown in the table below or may be downloaded from www.rya.org.uk/racing/running-racing/templates. Protests shall be submitted and protest hearings will be held as shown in the table below:

Protests for races starting on	Protest time limit (same day as race unless stated)	Time zone	Protest forms will be available at	Protests will be heard at	Schedule of protests will be posted at
8 July	1600 hrs	BST	RDYC	RDYC	RDYC by 1700 hrs
9 July	1600 hrs	BST	RDYC	RDYC	RDYC by 1700 hrs
10 July	1600 hrs on 11 July	BST	GYC	GYC	GYC by 1800 hrs
12 July	1000 hrs on 13 July	French	Race committee vessel	Paimpol Maison des Plaisanciers (PMP)	PMP by 0900 hrs on 14 July
15 July	2100 hrs	French	Race committee vessel	PMP	PMP by 0900 hrs on 16 July

12.4.

12.4. The protest time limit applies also to protests by the race committee about incidents they observe in the racing area

12.5. Adding to RRS 63.7, if the race signal “AP over A” is displayed ashore on the last scheduled day of racing, a request for reopening a hearing shall be delivered not later than 30 minutes after the signal is displayed

12.6. For any hearing involving an incident at the rounding of a virtual mark, competitors should be prepared to provide electronic evidence of their rounding

13. SERIES SCORING

- 13.1. RRS A5.3 shall apply to all races in the event
- 13.2. No race score will be discarded
- 13.3. The series score and the score for the overall prize for a boat will be the sum of its race scores, weighted as follows:

Race	Weighting
Each race of The Dartmouth Classics Day 1	0.5
Bay race of The Dartmouth Classics Day 2	1.0 (see note below)
The Classic Channel Race from Dartmouth to St Peter Port	3.0
The Classic St Peter Port to Lézardrieux Race	2.0
The Classic Tour de l'Île de Bréhat	1.5

Note: If the bay race is cancelled and racing on Day 2 takes place on triangle courses, each race will carry a weight of 0.5

- 13.4. Prizes for the overall group results for the Classic Channel Regatta will be awarded on the basis of total points scored in individual races.
- 13.5. Class 1, 2 & 3 boats are eligible for prizes within their respective groups. Class 4 boats will get a result in the individual races sailed but are not eligible for any prizes apart from one prize for the best performing Class 4 boat in the Regatta. The Overall Prize will be awarded to the overall winner of class 1, 2 & 3 boats in the regatta irrespective of the group.

14. [NP][DP] SAFETY REGULATIONS

Advisory note: other safety regulations are detailed in NoR 1.14 and 1.15

- 14.1. A boat that retires from racing shall notify the race committee on VHF Ch72 before leaving the racing area. If that is not possible, the boat shall notify the Principal Race Officer by telephone or text to +44 781 665 4590 at the first opportunity. In any event, boats retiring shall notify the race committee within the protest time limit. Boats failing to comply with this sailing instruction shall be scored DNE without a hearing (this changes RRS A5.1 and A 5.3).
- 14.2. For safety reasons, boats may run their engines in neutral gear at any time when racing. A boat's engine may be put into gear and thrusters may be used at any time during a race in order to take action to avoid a collision. A boat that puts her engine in gear or uses her thruster at any time while racing shall submit a written declaration of Engine Use to the Race Committee as soon as possible after racing, stating the length of time the engine was in gear or the thruster was used and the reason for using it. These declaration forms will be distributed at the Skippers' Briefings. The Protest Committee will review all such declarations to determine whether any competitive advantage was gained.
- 14.3. Each Competitor is individually responsible for wearing a personal flotation device adequate for the conditions. However a combined Lifejacket and Harness shall be worn when on deck under any of the conditions below;
 - Between the hours of sunset and sunrise

- When alone on deck
- When reefed
- When the true wind speed is 20 knots or above
- When the visibility is less than 1 nautical mile
- When Flag Y is displayed by the Committee boat and/or broadcast on VHF

15. EQUIPMENT AND MEASUREMENT CHECKS

15.1. A boat and its equipment may be inspected at any time for compliance with class rules, the NoR and SIs.

15.2. [DP] When instructed by a race official, a boat shall proceed to a designated area for inspection.

16. HAUL OUT RESTRICTIONS

Boats shall not be hauled out during the event except with, and according to, the terms of written permission of the race committee.

17. PRIZES

Prizes will be awarded as follows:

Race	Prizes
The Dartmouth Classics	1st, 2nd & 3rd in each group
The Classic Channel Race, Dartmouth to St Peter Port	1st, 2nd & 3rd in each group
The Classic St Peter Port to Lézardrieux Race	1st, 2nd & 3rd in each group
The Classic Tour de l'île de Bréhat	1st, 2nd & 3rd in each group
Overall Prize in Each Group	1st, 2nd, 3rd overall in the Regatta in each group
Overall Prize	Best Performing Boat in the Regatta
Overall Prize Class 4	Best Performing boat in Class 4 overall

SECTION 2 - THE DARTMOUTH CLASSICS 8-9 JULY

18. RULES

18.1. [NP][DP] World Sailing Offshore Special Regulations (OSR) Category 4 applies.

19. RACING AREA

The racing area is Start Bay.

20. SCHEDULE OF RACES

20.1. A skippers' briefing will be held at 1815 hrs on 7 July at RDYC.

20.2. Racing is scheduled as follows:

Date	Race	Race format	1st warning signal	Race diagram
8 July	1	Triangle	1155 hrs	Appendix A
8 July	2	Triangle	As soon as possible	Appendix A
9 July	3	Regatta course	1025 hrs	Appendix B

20.3. No warning signal will be made after 1500 on either day.

20.4. If the Race Committee decides that conditions are unsuitable, the scheduled races for 8 & 9 July may be changed, e.g. swapped, repeated or dropped and the time of the first warning signal may be amended. This decision will be made in accordance with SI 3.1. The decision to change the schedule shall not be subject to redress (this changes RRS 61.1(a)).

21. SIGNALS MADE ASHORE

Signals made ashore will be displayed at RDYC's flagpole.

22. COURSES AND MARKS

See appendices A and B.

23. OBSTRUCTIONS

23.1. While racing, boats shall pass to seaward of the following obstructions:

Mark	Description	Latitude	Longitude
Western Blackstone Rock	Rocks	50° 20.03' N	3° 33.7' W
West Rock	S cardinal	50° 19.86' N	3° 32.47' W
Mewstone	S cardinal	50° 19.92' N	3° 31.88' W
Combe Rocks	Rocks	50° 19.49' N	3° 34.18' W
Dancing Beggars	Rocks	50° 19.41' N	3° 34.51' W

Advisory note: it is strongly advised to avoid these areas when not racing

23.2. Wave buoy together with its two orange floats which can lie up to 30m away is designated as an obstruction (see RRS definitions): 50° 17.54' N 03° 37.0' W.

Note: Wave buoy has an underwater protective ring in addition to the outlying floats

24. THE START

The starting line is between a staff on the committee boat displaying an orange flag and an orange tetrahedral buoy or adjacent navigation mark or RDYC racing mark at the port end.

25. SHORTENING COURSE

25.1. For triangle courses on 8 July, if a committee boat displays flag C over flag S, with group flags as appropriate, and makes repetitive sound signals, boats to which the signal applies shall sail directly from mark 3 to the finish line (this amends RRS 32.2 and 33).

25.2. In addition, if all boats in a group have completed a round of the course but no boat has finished and the weather conditions change such as to affect the fairness of the competition, the Race Officer may retrospectively shorten the course by an announcement on VHF Ch72. The result will be taken on the last round completed by all boats in the group. The Finishing Window will not apply.

26. THE FINISH

The finish line is between a staff displaying a blue flag on the committee boat and the finish mark specified in the appendices as applicable.

27. TIME LIMITS

27.1. Triangle races. Time limit is 60 minutes and the finishing window is 30 minutes.

27.2. Bay Race. Time limit is 4 hours and the finishing window is 1 hour.

27.3. If these times are amended by the race committee, the new times will be announced on VHF Ch72 before the first warning signal that day.

SECTION 3 - THE CLASSIC CHANNEL RACE, DARTMOUTH TO ST PETER PORT 10-11 JULY

28. RULES

28.1. [NP][DP] World Sailing OSR Category 3 with liferaft applies

Note: Cat 3 plus liferaft inspection card is available at: https://media.sailing.org/sailing/wp-content/uploads/2025/12/05090953/Extract-Mo3Life_2026-2027_v1.pdf

29. RACING AREA

The racing area is the English Channel between Start Bay and St Peter Port.

30. SCHEDULE OF RACE

30.1. A skippers' briefing will be held at 1000 hrs on 10 July at RDYC.

30.2. The first warning signal is scheduled for 1255 hrs on 10 July.

31. SIGNALS MADE ASHORE

Signals made ashore will be displayed at RDYC's flagpole.

32. COURSES AND MARKS

32.1. Course 1: Start - Emsstrom Wreck N cardinal to starboard - Channel Racon to port - Casquets to port - Les Hanois to port - Longue Pierre to port - Anfre Beacon to port - Finish

32.2. Course 2: Start - Channel Racon to port - Casquets to port - Les Hanois to port - Longue Pierre to port - Anfre Beacon to port - Finish

32.3. The course to be sailed will be announced at the skippers' briefing (SI 30.1) and on the skippers' Whatsapp group by 1230 hrs and on VHF Ch72 no later than 5 minutes before the first warning signal.

32.4. The following are available marks of the course (not all will be used depending on which course is sailed):

Mark	Description	Lat	Long	Keep to
Castle Ledge	Starboard lateral buoy	50° 20.00' N	3° 33.11' W	port
RDYC 4 (alt start)	Yellow with no. 4	50° 19.6' N	3° 32.4' W	port
Emsstrom Wreck (course 1 only)	N cardinal buoy	50° 28.17' N	3° 24.85' W	starboard
Channel Racon	Safe water mark	49° 54.46' N	2° 53.75' W	port
Casquets	Lighthouse	49° 43.32' N	2° 22.62' W	port
Les Hanois	Lighthouse	49° 26.10' N	2° 42.14' W	port
Longue Pierre	Yellow pillar	49° 25.37' N	2° 31.48' W	port
Anfre Beacon	Yellow pillar	49° 26.46' N	2° 31.49' W	port

32.5.

33. OBSTRUCTIONS

33.1. For obstructions in the Dartmouth area: see SI23.

- 33.2. Wreck of the MV Emsstrom - boats shall not pass between the S cardinal buoy at 50° 28.03' N, 3° 24.86' W and the Emsstrom Wreck N cardinal buoy (see SI32.4).
- 33.3. Rocks and hazards off Guernsey - boats shall pass not less than 0.5 nautical miles to seaward of the rocks near Les Hanois Light and the south and south-east coasts of Guernsey.**
- 33.4. Boats shall not enter the Casquets Traffic Separation Scheme (TSS).
34. THE START
- 34.1. The start line will be announced on VHF Ch72 and on the skippers' Whatsapp group by 1230 on 10 July.
- 34.2. The starting line will be between a staff on the committee boat displaying an orange flag at the starboard end and Castle Ledge buoy or RDYC racing mark number 4 at the port end .
35. SHORTENING COURSE
- 35.1. The course may be shortened as follows:
- 35.1.1. Line A: when Channel Racon buoy bears 060° (see SI32.4)
- 35.1.2. Line B: when Casquets Lt bears 060° (see SI32.4)
- 35.1.3. Line C: when Les Hanois Lt bears 060° (see SI32.4)
- 35.2. The line at which the race will be shortened will be announced on VHF Ch72.
- 35.3. Boats are to time their own finish and, where possible, note the name and sail number of the boat immediately ahead and immediately behind. Boats shall complete the declaration form at Appendix C and hand it to the race committee on arrival in St Peter Port.
- 35.4. The decision as to which line to use in order to shorten the race shall not be subject to redress (this changes RRS 61.1(a)).
36. THE FINISH
- 36.1. The finish line is when Castle Lighthouse (lit tower at the end of Castle Cornet Breakwater: 49° 27.30' N, 2° 31.45' W) bears 270°. With the ODM being a line of longitude at 2° 31.45' W
- 36.2. Boats are to record their finish time using the form at Appendix C and hand it in to the race committee at GYC. If possible, they are to note the names of the boats immediately ahead and behind.
- 36.3. In addition, boats shall report to the race committee on VHF Ch72 when passing Longue Pierre beacon (49° 25.36' N, 2° 31.48' W), giving their boat name and sail number.
37. TIME LIMITS
- 37.1. The time limit for this race is 18 hours and the finishing window is 3 hours.

SECTION 4 - THE CLASSIC ST PETER PORT TO LÉZARDRIEUX RACE 12 JULY

38. RULES

38.1. [NP][DP] World Sailing OSR Category 3 with liferaft applies

Note: requirements and inspection card for “Cat 3 plus liferaft” are available at: https://media.sailing.org/sailing/wp-content/uploads/2025/12/05090953/Extract-Mo3Life_2026-2027_v1.pdf

38.2. World Sailing Development Rule Appendix WP - Rules for Racing Around Waypoints - will be in force with the exception of WP 1.1

39. RACING AREA

The racing area is the waters between Guernsey and the North Brittany coast.

40. SCHEDULE OF RACE

40.1. A Skippers’ Briefing will be held at 1730 on 11 July at GYC

40.2. The first warning signal is scheduled for 0825 12 July

41. SIGNALS MADE ASHORE

Signals made ashore will be displayed at GYC’s flagpole

42. COURSES AND MARKS

42.1. The course to be sailed will be displayed on the skippers’ Whatsapp group by 0800 hrs on 12 July and repeated on VHF Ch72 before the first warning signal

42.2. Course 1: Start - Anfre Beacon to starboard - Longue Pierre to starboard - Line A ODM to stbd, Line B ODM to port, Nord Horaine to port - Les Echaudes to port - Finish 1

42.3. Course 2: Start - Anfre Beacon to starboard - Longue Pierre to starboard - Line A ODM to stbd, Line B ODM to port, Men Marc’h to starboard - Finish 2

42.4. The following are marks of the course:

Mark	Description	Lat	Long	Keep to
Anfre Beacon	Yellow pillar	49° 26.46’ N	2° 31.49’ W	starboard
Longue Pierre	Yellow pillar	49° 25.37’ N	2° 31.48’ W	starboard
Nord Horaine	N cardinal	48° 54.53’ N	2° 55.43’ W	port
Les Echaudes	Port lateral	48° 53.37’ N	2° 57.32’ W	port
Men Marc’h	E cardinal buoy	48° 53.15’ N	2° 51.85’ W	starboard
Shortened Course 1 Line A ODM (SI45.1)	Virtual mark West of Roche Douvres	49° 10.6’ N	3° 02.6’ W	stbd
Shortened Course 2 Line B ODM (SI45.1)	Virtual mark East of Roche Douvres	49° 01.9’ N	2° 35.3’ W	port

43. OBSTRUCTIONS

- 43.1. Roche Douvres: Boats shall sail no closer than 2.0 nautical miles from Roche Douvres Light (49° 06.30' N, 002° 48.84' W).
- 43.2. Barnouic: Boats shall sail no closer than 2.0 nautical miles from Barnouic E cardinal beacon (49° 01.63' N, 002° 48.38' W).
- 43.3. Additionally the area bounded by straight lines and sectors of the above Roche Douvres and Barnouic obstruction perimeters and Roches Gautier W cardinal buoy is designated as an obstruction area and shall not be entered. See sketch chart in Appendix E.
- 43.4. Wind Farm: Boats shall not enter the wind farm area to the East of Paimpol. See sketch chart in Appendix G.

44. THE START

The start line will be an extension of a transit through two triangles mounted on the east side of Castle Cornet. The outer limit mark will be the committee boat.

45. SHORTENING COURSE

- 45.1. The course may be shortened at line A or B (below) depending on whether boats have chosen to go east or west of Roche Douvres plateau:
Line A extending West of Roche Douvres when Roche Douvres Lt bears 115° (see SI43.1) with an outer distance virtual mark at 49° 10.6' N, 3° 02.6' W
Line B extending East of Roche Douvres when Roche Douvres Lt bears 295° (see SI43.1) with an outer distance virtual mark at 49° 01.9' N, 2° 35.3' W
 When transiting this line, the requirement to keep clear of Roche Douvres light shall apply (see SI43.1).
- 45.2. The course may also be shortened as follows:
 Course 1: when a boat is 7.5 nm from Les Sirlots starboard lateral navigation buoy (see SI46.1)
 Course 2: when a boat is 7.5 nm from Men Garo east cardinal (see SI46.2)
- 45.3. Boats shall record their own times and positions when crossing the lines in SI45.1 or circles in SI45.2 and, where possible, note the names of the boats immediately ahead and behind. This information shall be noted regardless of whether or not the course is shortened. Boats shall complete the declaration form at Appendix D using this information and hand it to the race committee on arrival in Lézadrieux.
- 45.4. If no boat finishes within the time limit, the race may be retrospectively shortened using the information noted in SI45.3.

46. THE FINISH

- 46.1. **Finish 1**: Between Les Sirlots starboard lateral navigation buoy at the starboard end and the Petit Pen-Azen port lateral navigation buoy at the port end:

Mark	Description	Lat	Long	Keep to
Les Sirlots	Stbd lateral buoy	48° 52.92' N	2° 59.54' W	starboard
Petit Pen-Azen	Port lateral buoy	48° 52.43' N	2° 59.40' W	port

46.2. **Finish 2:** Between Men Garo east cardinal buoy at the starboard end and Cain-ar-Monse north cardinal tower at the port end:

Mark	Description	Lat	Long	Keep to
Men Garo	East cardinal	48° 50.78' N	2° 58.03' W	starboard
Cain-ar-Monse	North cardinal	48° 50.16' N	2° 56.82' W	port

46.3. Boats are to record their finish time using the form at Appendix E and hand it in to the race committee on arrival in Lézardrieux. If possible, they are to note the names of the boats finishing before and after them.

46.4. In addition, boats shall report to the race committee on VHF Ch72 when passing Roche Douvres Plateau giving their boat name and sail number.

46.5. Once boats have finished, they should clear the finish line and proceed to berth in Lézardrieux.

47. TIME LIMITS

The time limit for this race is 12 hours and the finishing window is 3 hours.

SECTION 5 - THE TOUR DE L'ÎLE DE BRÉHAT 15 JULY

48. RULES

48.1. [NP][DP] World Sailing OSR Category 4 (with Category 3 engines) applies

49. RACING AREA

The race area is the waters around the île de Bréhat.

Advisory note: the tidal coefficient for the day is 94 which will mean strong currents!

50. SCHEDULE OF RACE

50.1. Racing will take place on 15 July.

50.2. A skippers' briefing will be held at 1600 hrs on 14 July in the Paimpol Maison des Plaisanciers.

50.3. One race is scheduled with the first warning signal at 0955 hrs on 15 July.

50.4. No warning signal shall be made after 1400 hrs.

51. SIGNALS MADE ASHORE

All signals will be displayed from the mast of the committee boat in harbour.

52. COURSES AND MARKS

52.1. Start – Yellow buoy southeast of Les Charpentiers to port – Cain-ar-Monse to port – Yellow buoy located near La Vieille de Loguivy to starboard – Nord Horaine to starboard – Men Marc'h to starboard - Yellow buoy southeast of Charpentiers to starboard – Finish.

52.2. In the Trieux channel between La Vieille de Loguivy and North Horaine, boats shall remain in the navigable channel defined by buoyage. In this context navigation buoys are obstructions, not marks of the course, and RRS19 and 20 apply.

52.3. See Appendix F for a course sketch chart

52.4. The following are marks of the course:

Mark	Description	Lat	Long	Keep to
Laid mark 1	Yellow buoy SE of Les Charpentiers cardinal beacon	48° 47.90' N (cardinal beacon)	2° 56.03' W (cardinal beacon)	port (starboard at 2nd passing)
Cain-ar-Monse	North cardinal buoy	48° 50.16' N	2° 56.82' W	port
Laid mark 2	Yellow buoy near La Vieille de Loguivy cardinal tower	48° 49.61' N (cardinal tower)	3° 03.83' W (cardinal tower)	starboard
Nord Horaine	N cardinal buoy	48° 54.53' N	2° 55.43' W	starboard
Men Marc'h	E cardinal buoy	48° 53.15' N	2° 51.85' W	starboard

53. OBSTRUCTIONS

There are many hazards and rocks on all legs of the course. Competitors are to navigate with care taking particular note of the draft and sailing characteristics of their boat and the tidal set. In addition, competitors are reminded of their obligations under RRS 19 and 20.

54. THE START

54.1. The start will be in the vicinity of La Jument isolated danger beacon (48°47.35'N, 2° 57.95'W) between a staff on the committee boat displaying an orange flag at the starboard end and a committee boat on the port end displaying a blue flag.

55. SHORTENING COURSE

The course may be shortened at any mark of the course in accordance with RRS 32.2(a), particularly in the event of insufficient wind and strong tidal streams.

56. THE FINISH

The finish is at the same location as the start on a line between a staff on the committee boat displaying a blue flag at the port end.

57. TIME LIMITS

The time limit for this race is 7 hours and the finishing window is 75 minutes.

APPENDIX A - TRIANGLE RACES 8 JULY

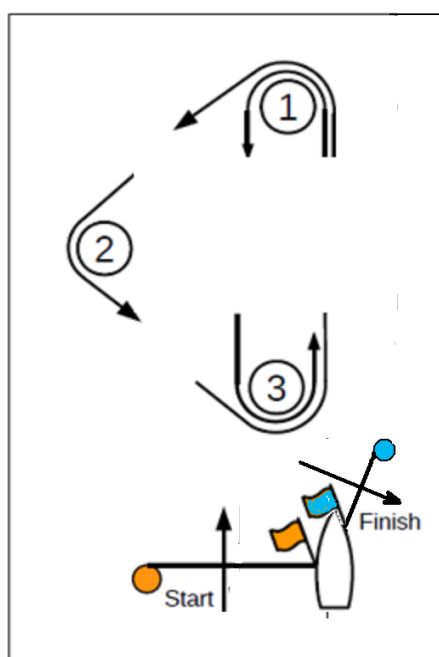
Courses

1. Two separate windward marks (described below) will be laid for all courses:
 - 1.1. Short course
 - 1.2. Long course
2. For boats sailing on the long course, the short course windward mark is not a mark of the course. Other marks are common to both long and short courses

Mark	Description
Starting mark	To be advised - see SI24
Mark 1 - short course	Yellow 1.3m tetrahedral
Mark 1 - long course	Orange 1.3m cylindrical
Mark 2	Red 1.3m tetrahedral
Mark 3	Black 1.3m tetrahedral
Finishing mark	Blue 1.3m tetrahedral

Course	Mark rounding order
A	Start - 1 - 2 - 3 - 1 - 3 - Finish
B	Start - 1 - 2 - 3 - 1 - 3 - 1 - 2 - 3 - Finish

Course diagram and marks



APPENDIX B - BAY RACE 9 JULY

1. Marks of the course will be a mixture of permanent navigation or fixed and laid racing marks. These are shown in the following sketch and defined in the table below. Not all marks defined may be used.
2. "No later than 15 minutes before the first warning signal, the race committee will broadcast the course to be sailed on vhf Ch72. The marks to be passed (and description for laid marks), in which order and the side on which each is to be left will be given
3. The finishing line will be between a staff displaying a blue flag on the Race Committee finishing boat at the starboard end and the course side of the last mark to be passed at the port-end.

Marks

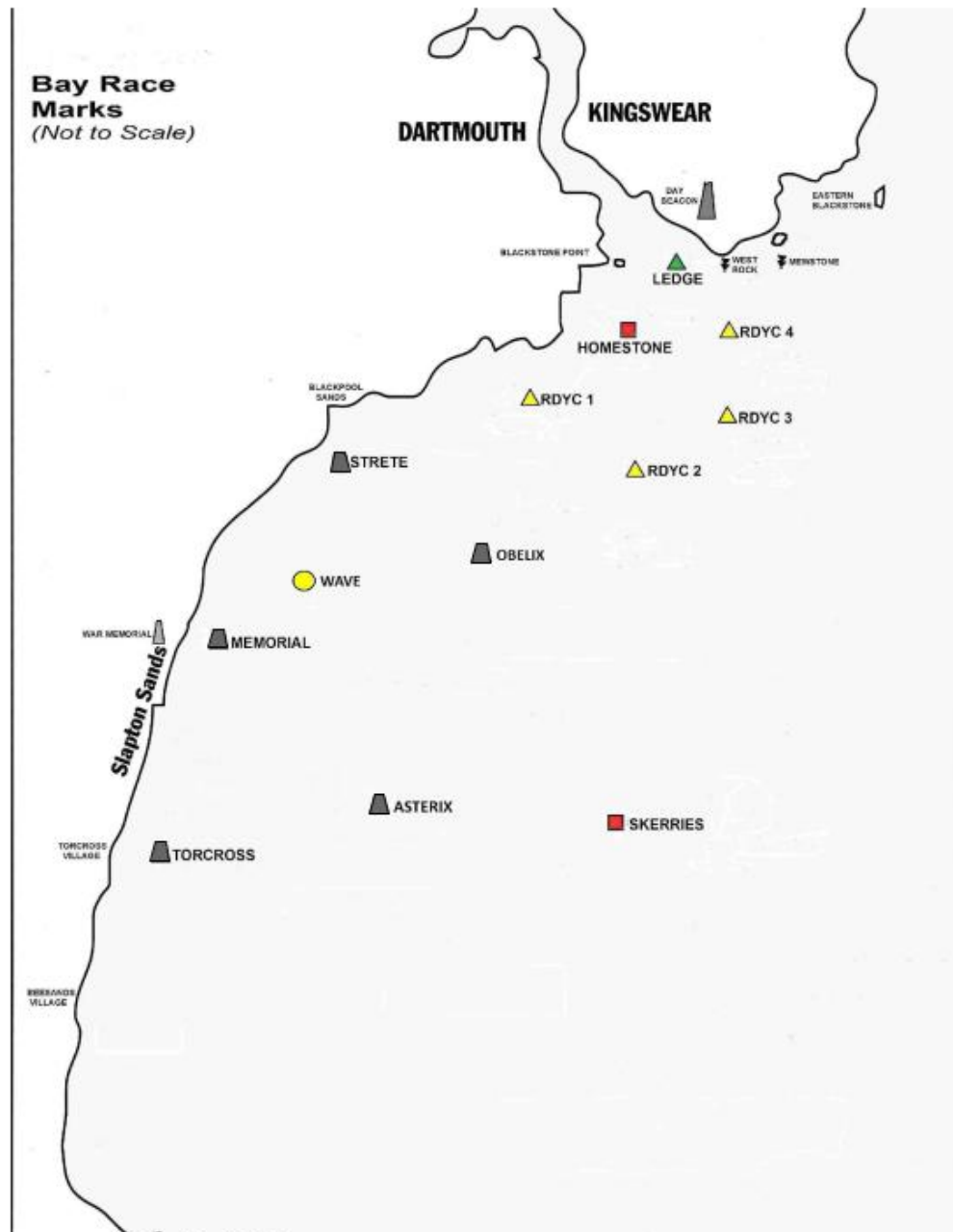
The available marks are as follows (not all will be used):

Mark	Description	Lat	Long
Strete	Laid mark to be advised	50° 18.7' N	3° 36.6' W
Memorial	Laid mark to be advised	50° 17.2' N	3° 38.0' W
Torcross	Laid mark to be advised	50° 16.0' N	3° 38.6' W
Asterix	Laid mark to be advised	50° 16.5' N	3° 36.2' W
Obelix	Laid mark to be advised	50° 18.0' N	3° 35.2' W
RDYC 1	Yellow with no. 1 *	50° 19.1' N	3° 34.5' W
RDYC 2	Yellow with no. 2 *	50° 18.7' N	3° 33.4' W
RDYC 3	Yellow with no. 3 *	50° 19.0' N	3° 32.5' W
RDYC 4	Yellow with no. 4 *	50° 19.6' N	3° 32.4' W
Homestone	Port lateral buoy	50° 19.6' N	3° 33.5' W
Castle Ledge	Starboard lateral	50° 20.0' N	3° 33.1' W
Mew Stone	South cardinal	50° 19.9' N	3° 31.9' W
Eastern Blackstone	Rock	50° 20.2' N	3° 31.2' W
Skerries	Port lateral	50° 16.3' N	3° 33.8' W
West Rock	South cardinal	50° 19.9' N	3° 32.5' W

* Example of RDYC mark:



Sketch of the race area



APPENDIX C - DECLARATION FORM 1

Declaration Form - The Classic Channel Race, Dartmouth to St Peter Port

Yacht		Skipper	
--------------	--	----------------	--

Time of passing shorten course lines (use British Summer Time BST)

Line A when Channel Racon bears 060°			
Date		Time BST	
Boat ahead		Boat behind	

Line B when Casquets Light bears 060°			
Date		Time BST	
Boat ahead		Boat behind	

Line C when Les Hanois Light bears 060°			
Date		Time BST	
Boat ahead		Boat behind	

“Passing Longue Pierre” report to race committee on VHF Ch72 (see SI36.3)

Date		Time BST	
-------------	--	-----------------	--

Time of finish (use British Summer Time BST)

Date		Time BST	
Boat ahead		Boat behind	

APPENDIX D - DECLARATION FORM 2

Declaration Form - The Classic St Peter Port to Lézardrieux Race

Yacht		Skipper	
--------------	--	----------------	--

Time of passing 1st shorten course position (see SI45.1) - use British Summer Time BST

Line A when Roche Douvres Lt bears 115° or Line B when Roche Douvres Lt bears 295° *			
Date		Time BST	
Boat ahead		Boat behind	

* Delete as required

“Passing Roche Douvres” report to race committee on VHF Ch72 (see SI46.4)

Date		Time BST	
-------------	--	-----------------	--

Time of passing 2nd shorten course position (see SI45.2) - use British Summer Time BST

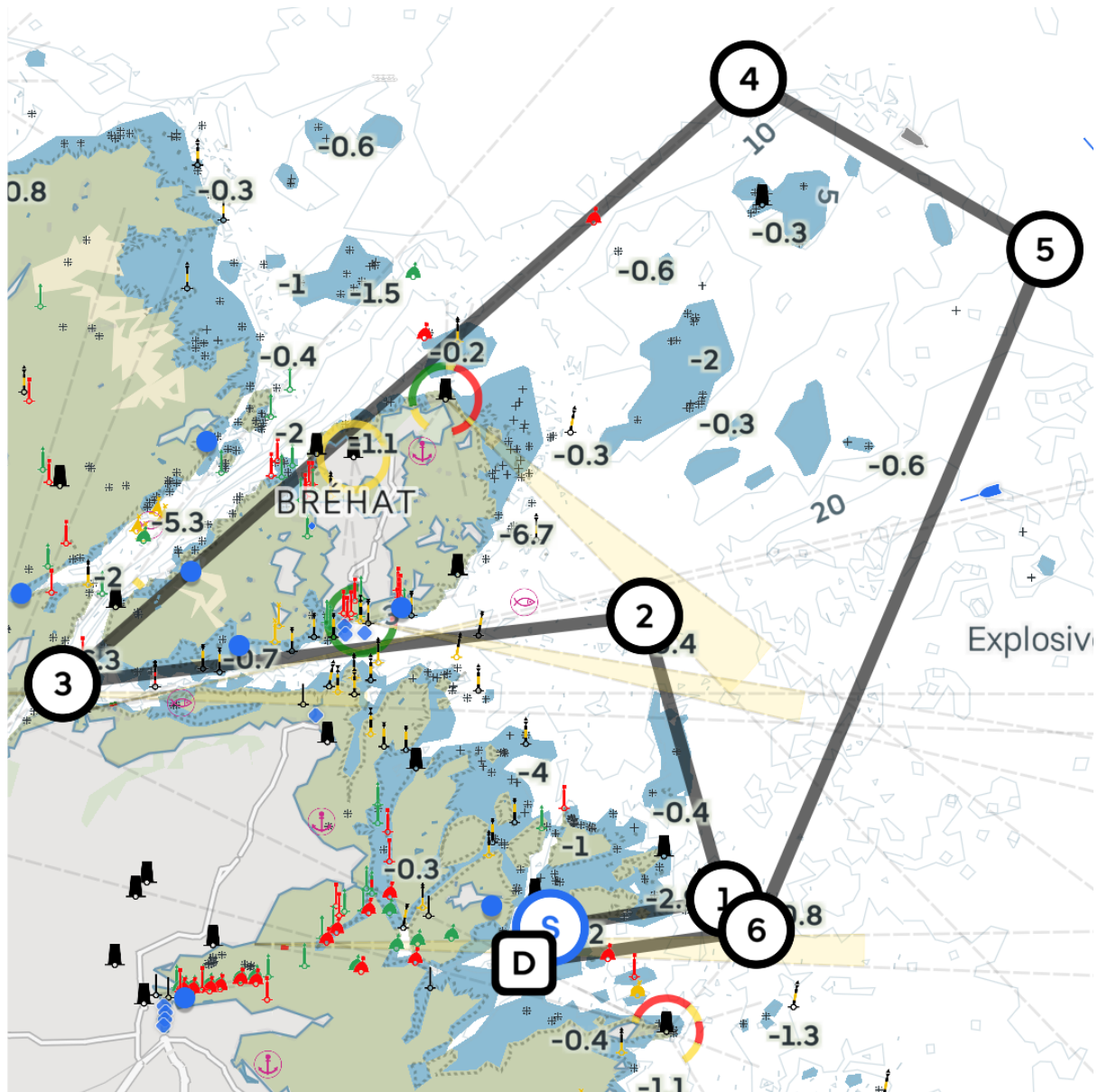
Course 1 when 7.5 nm from Les Sirlots <u>or</u> Course 2 when 7.5 nm from Men Garo *			
Date		Time BST	
Boat ahead		Boat behind	

* Delete as required

Time of finish (use British Summer Time BST)

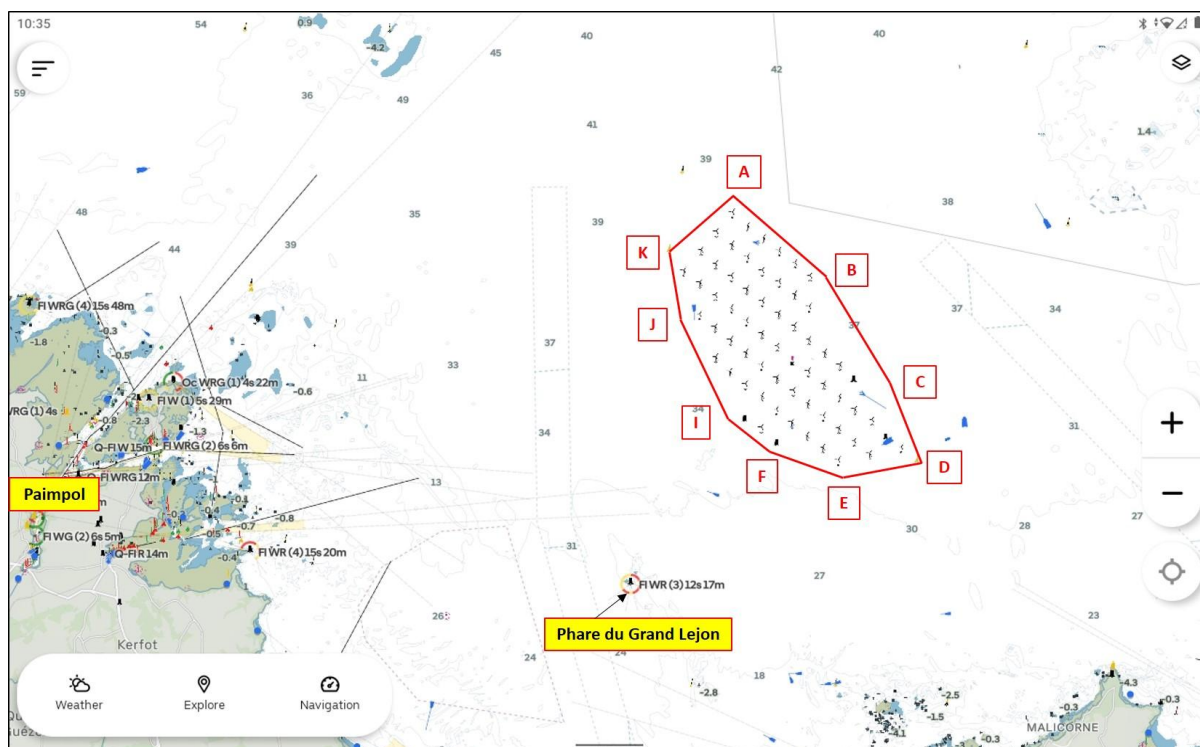
Date		Time BST	
Boat ahead		Boat behind	

APPENDIX F - BRÉHAT RACE DIAGRAM



APPENDIX G - LOCATION AND EXTENT OF WIND FARM TO EAST OF PAIMPOL

The red line shows the extent of the wind farm; boats shall not cross this line.



Coordinates of points A to K (G & H not used) are as follows:

Point	Lat	Long
A	48° 55.52' N	002° 34.04' W
B	48° 53.00' N	002° 30.11' W
C	48° 49.05' N	002° 27.26' W
D	48° 47.89' N	002° 26.96' W
E	48° 47.49' N	002° 30.55' W
F	48° 48.38' N	002° 33.31' W
I	48° 51.58' N	002° 35.61' W
J	48° 53.44' N	002° 36.77' W
K	48° 54.55' N	002° 36.98' W