



Cowes – Dartmouth Feeder Race



for yachts joining the
Classic Channel Regatta

Sunday 14th July – Tuesday 16th July 2024

SAILING INSTRUCTIONS

OFFICIAL TIME

All times for this race are in British Summer Time (BST).

ABBREVIATIONS

[NP] - A breach of this rule will not be grounds for protest by a boat. This changes RRS 60.1.

[DP] - Rules for which the penalties are at the discretion of the protest committee.

Throughout these sailing instructions, references to the Royal London Yacht Club may be abbreviated to RLYC and to the Royal Dart Yacht Club may be abbreviated to RDYC.

RRS	SI	RRS	SI
27.3	12.6	62.1(a)	2.2, 3.4, 3.5
29.1	1.3	63.1(a)	1.3, 12.3
35	1.3, 14.2	A5	1.3, 12.3, 12.5, 14.2, 17.2
61.1(a)(2)	16.1	A10	14.2

COORDINATES OF MARKS, OBSTRUCTIONS, ETC

All latitude and longitude coordinates are to be regarded as approximate.

1. RULES

- 1.1. The regatta will be governed by the rules as defined in The Racing Rules of Sailing 2021-2024 (RRS). The following racing rules are changed:
- 1.2. World Sailing Development Rule DR21-01 will be used at the start. The definition of Start is therefore changed as follows:

Start.

A boat starts when her hull having been entirely on the pre-start side of the starting line, and having complied with RRS 30.1 if it applies, any part of her hull crosses the starting line from the pre-start to the course side either:

- (a) at or after her starting signal, or
- (b) during the last one minute before her starting signal.

- 1.3. A boat starting under SI 1.2(b) shall not return to the pre-start side of the line and will receive a time penalty, without a hearing, of 10% (rounded to the nearest minute) added to her elapsed time. This changes RRS 35, 63.1(a) and A5. In addition, no individual recall will be signalled. This changes RRS 29.1.
- 1.4. When a boat starts in accordance with item (b) of the definition Start she shall not return to the pre-start side of the line.
- 1.5. RRS 37 does not apply.
- 1.6. A boat's anchor is to be stowed such that it does not protrude beyond the bow of the boat.
- 1.7. If there is conflict between the SIs and NoR the SIs take precedence.

2. CHANGES TO THE SAILING INSTRUCTIONS

- 2.1. Any change to the sailing instructions will be posted before 0800 hrs on the day it will take effect, except that any change to the schedule of races will be posted by 2000 hrs on the day before it will take effect.
- 2.2. [NP] Oral changes on the water to these sailing instructions shall be broadcast on VHF Ch. 72. Failure to receive such broadcasts will not be grounds for redress. This changes RRS 62.1(a).

3. COMMUNICATIONS WITH COMPETITORS

- 3.1. Notices to competitors will be posted on the official notice board located on Classic Channel Regatta website at www.classic-channel-regatta.eu/racing and may be copied to the the RLYC website at www.rlyc.org.uk.
- 3.2. The distribution of yachts from classes into groups will depend on their JCH Time Correction Factor. A list of the yachts and their groups will be displayed on the notice board at the RDYC by 19:00 on the day before the first scheduled race of the regatta.
- 3.3. [NP] On the water, the race committee will where possible monitor and communicate with competitors on either VHF Ch M1(the RLYC race management channel) or VHF Ch 72 (the Classic Channel Regatta race management channel). Boats shall monitor Ch M1 from leaving moorings until 60 minutes after the last start of the race. When racing, boats shall monitor Ch 72 from that time.
- 3.4. All starting, postponement, abandonment, shortening and recall signals, the course to be sailed and the count down, will, where possible, be broadcast by the race committee on VHF Ch. M1 (37A). Failure to make a broadcast or to time it accurately, and failure to receive such broadcasts, shall not be grounds for a request for redress. This changes RRS 62.1(a).

- 3.5. Changes to finishing window times and the time of the first boat in a class to finish may be broadcast by the race committee on VHF Ch. M1 (37A) /VHF Ch 72. Failure to receive such broadcasts will not be grounds for redress. This changes RRS 62.1(a).
- 3.6. [DP] While racing, except in an emergency, a boat shall not make voice or data transmissions and shall not receive voice or data communications that are not available to all boats.
- 3.7. The race committee may use email and WhatsApp to alert competitors to notices being posted.

4. **CODE OF CONDUCT**

- 4.1. [DP] Competitors and support persons shall comply with reasonable requests from race officials.
- 4.2. [DP] Competitors and support persons shall handle any equipment or place advertising provided by the organizing authority in accordance with any instructions for its use and without interfering with its functionality.

5. **SIGNALS MADE ASHORE**

- 5.1. When flag “AP” is displayed ashore, “1 minute” is replaced with “not less than 75 minutes” in the race signal AP.
- 5.2. When flag Y is displayed ashore RRS 40 applies at all times when afloat until further notice.

6. **SCHEDULE OF RACES**

- 6.1. A Skippers’ Briefing will take place at 1000 Sunday 14 July at the RLYC, West Cowes.
- 6.2. The start time for the race is 1600 Sunday 14 July.
- 6.3. One race will be sailed. If the race is not completed it will not be re-sailed.

7. **GROUP FLAGS**

- 7.1. Depending on JCH Time Correction Factors and the number of entries received, boats entered in classes may be redistributed into groups, according to the following table:

Class	Group
1	Group 1 or Group 2
2	Group 1 or Group 2
3	Group 3 or Group 4
4	Group 3 or Group 4

- 7.2. [DP] All boats racing are required to display group flags. Group flags for the race are;

Group	Group Flag	Group	Group Flag
Group 1	Numeral 9	Group 3	Numeral 7
Group 2	Numeral 8	Group 4	Numeral 6

7.3. [NP][DP] Boats shall display their group numeral pennant from the backstay at a height of approximately 1.5m above the gunwale. In the absence of a backstay the pennant shall be displayed on the after part of the boat in an easily visible location.

8. RACING AREA

The race area is the English Channel between Cowes and Dartmouth.

9. COURSE

The course is from the starting line to the finishing line, keeping the English coast to starboard.

The course distance is approximately 90 nautical miles.

10. MARKS OF THE COURSE

10.1. The marks of the course are:

Mark	Description	Latitude	Longitude	Keep to
Snowden	Yellow spherical	50° 46.20' N	001° 17.75' W	starboard
Castle Ledge	Starboard lateral	50° 19.95' N	003° 33.11' W	starboard
Homestone	Port lateral	50° 19.62' N	003° 33.55' W	port

10.2. Harbour Buoy No 1 (starboard lateral; 50° 46.07' N, 001° 18.04' W) may be a mark of the course. If the race committee decides to make this buoy a mark of the course, this buoy shall be kept to port and the decision will be announced on VHF Ch 72 at the time of the attention signal.

11. [DP] OBSTRUCTIONS

11.1. Commercial and military shipping. Commercial and military shipping under way and constricted in their ability to manoeuvre are designated as moving exclusion zones. The exclusion zone extends to 100m on all sides of the vessel and includes any tugs, race committee escort vessels and pilot vessels. No boat shall enter the exclusion zone and if becalmed may use any means of propulsion to move out of the way. This should only be sufficient to leave the exclusion zone by the safest possible route and offer the competitor no significant advantage in the race.

11.2. Divers. Exclusion zones extend 25m around a dive vessel displaying code flag A, an inflated orange buoy marking a diver just under the surface, and a diver on the surface. A boat shall not enter the 25m zone.

11.3. Western Blackstone Rocks. Boats shall not pass between the shore (at or near Blackstone Point) and Western Blackstone Rocks (approximately 50°20.04' N, 003° 33.7' W).

11.4. Casquets TSS. Boats shall not enter the Casquets Traffic Separation Scheme.

12. THE START

12.1. The starting line is the extension of a line from a black and orange board on the RLYC clubhouse in line with a similar board on the wall of The Parade, Cowes. The ODM is Snowden (39). No IDM will be laid but if No 1 harbour buoy (81) is announced as part of the course, after the start boats shall keep the buoy to port. Chartlets showing the location of the start line are at Addendum A.

- 12.2. For the first class to start, an attention signal (orange flag with one sound signal) will be made five minutes before the warning signal.
- 12.3. [NP] After her warning signal no boat entirely on the course side of the starting line shall cross it in the direction from the course to the pre-start side. The penalty for infringement of this rule will be disqualification without a hearing,. This changes RRS 63.1 and A5.
- 12.4. [DP] Boats whose warning signal has not been made shall avoid the starting area during the starting sequence of other races.
- 12.5. A boat starting later than four minutes after her starting signal will be scored Did Not Start without a hearing. This changes RRS A5.1 and A5.2.
- 12.6. In the event of a general recall, the warning signal for the next class to start will be removed and then re-displayed with the next starting signal of the recalled class. This changes RRS 27.3.

13. THE FINISH

- 13.1. The finishing line will be between Castle Ledge and Homestone, keeping Homestone to port and Castle Ledge to starboard. A chartlet showing these marks is at Addendum B.
- 13.2. Boats are to record their finish time and hand it in to the race committee in the RDYC main office noting, if possible, the names or sail numbers of the boats ahead or astern of them. The form to be used is at Addendum C.

14. TIME LIMITS

- 14.1. The Time Limit is the maximum elapsed time for the first boat in that class to sail the course and finish.
- 14.2. The Finishing Window is the time for boats to finish after the first boat in that class sails the course and finishes. Boats failing to finish within the Finishing Window, and not subsequently retiring, penalised or given redress, will be scored Time Limit Expired (TLE) without a hearing. A boat scored TLE shall be scored points one more than the number of boats that finished within the Finishing Window and did not subsequently retire or were disqualified. This changes RRS 35, A5.1, A5.2 and A10.
- 14.3. The time limit will be 30 hours; the finishing window will be 6 hours.

15. PENALTY SYSTEM

- 15.1. For all groups RRS 44.1 is changed so that the Two-Turns Penalty is replaced by the One-Turn Penalty

16. HEARING REQUESTS

- 16.1. Boats shall comply with RRS 61.1(a) irrespective of their length. This changes RRS 61.1(a)(2) which is deleted.
- 16.2. Boats shall comply with RRS 61.1(a) irrespective of their length. This changes RRS 61.1(a)(2) which is deleted.
- 16.3. In addition to the provisions of RRS 61, boats intending to lodge a protest shall notify the race committee on VHF Ch 72.

- 16.4. Hearing request forms are available from the RLYC and the RDYC or may be downloaded from www.rya.org.uk/racing/running-racing/templates. Protests shall be submitted to the RDYC by 1600 Tuesday 16 July. A protest schedule will be posted by 1820 16 July and protest hearings will be held at the RDYC.
- 16.5. The protest time limit applies also to protests by the race committee about incidents they observe in the racing area.
- 16.6. For any hearing involving an incident at the rounding of a virtual mark, competitors should be prepared to provide electronic evidence of their rounding.

17. [NP][DP] SAFETY REGULATIONS

- 17.1. SIs 17.2 and 17.4 are in addition to the requirements of NoR paragraph 4.5.
- 17.2. A boat that retires from racing shall notify the race committee on VHF Ch 72 before leaving the racing area. If that is not possible, the boat shall notify the Principal Race Officer by telephone or text to 0781 665 4590 at the first opportunity. In any event boats retiring shall notify the race committee within the protest time limit. Boats failing to comply with this sailing instruction shall be scored DNE without a hearing. This changes RRS A5.1 and A 5.2.
- 17.3. For safety reasons, boats may run their engines in neutral gear at any time when racing. Engines may be put into gear and thrusters may be used may be used at any time during a race for a boat to take action to avoid a collision.
- 17.4. A boat that puts her engine in gear or uses her thruster at any time while racing shall submit a written declaration of “engine use” (Addendum C) to the race committee as soon as practicable after racing, stating the time the engine was in gear or thruster used, the reason for using it and the duration of use.
- 17.5. The Protest Committee will review all such declarations to determine whether any competitive advantage was gained.

18. EQUIPMENT AND MEASUREMENT CHECKS

- 18.1. A boat or equipment may be inspected at any time for compliance with the class rules, notice of race and sailing instructions.
- 18.2. [DP] When instructed by a race official on the water, a boat shall proceed to a designated area for inspection.

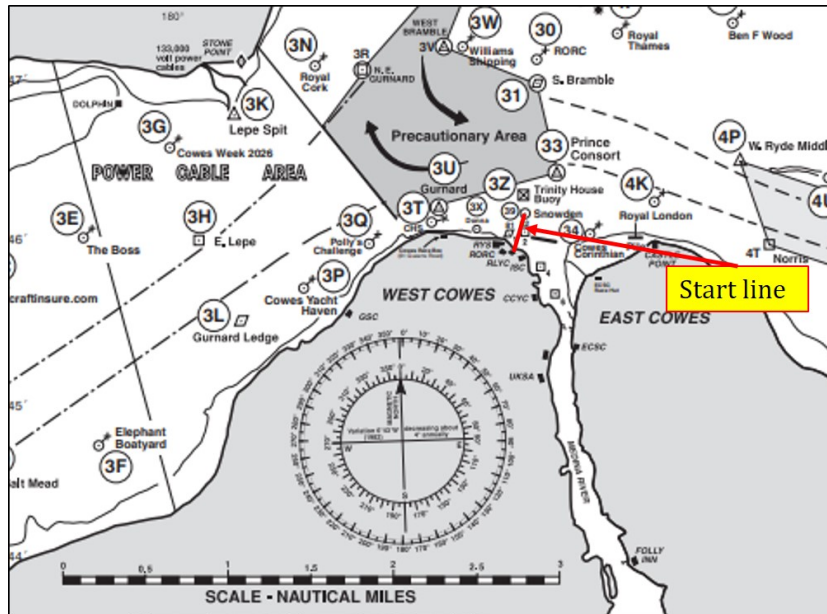
19. PRIZES

- 19.1. Prizes will be awarded at the RDYC at 1900 16 July.

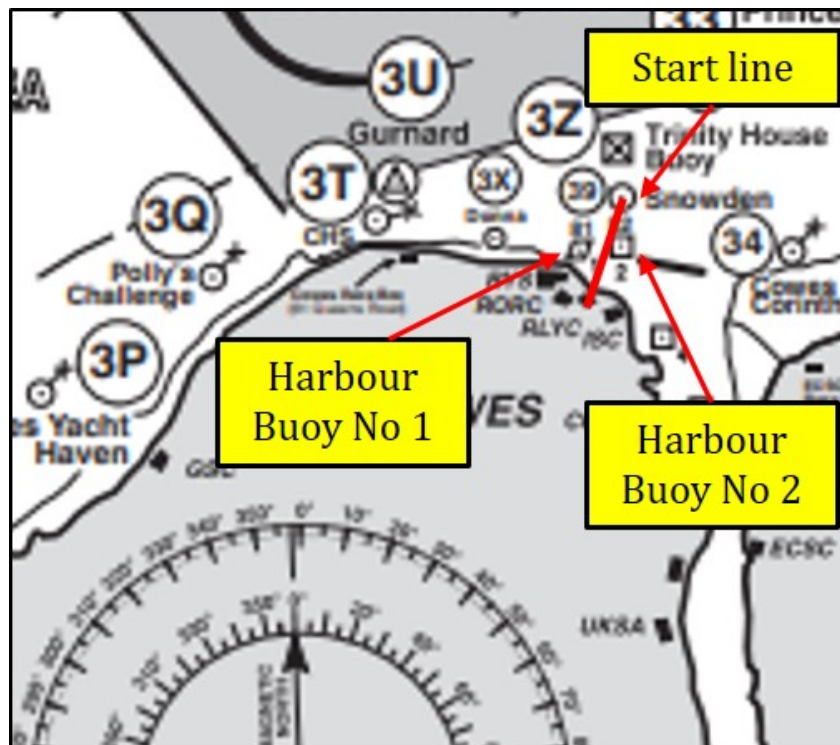
ADDENDUM A

CHARTLETS OF THE COWES ROADS, SHOWING THE LOCATION OF THE RLYC START LINE
(Not to be used for navigation)

The RLYC start line is shown in red on the diagrams below:

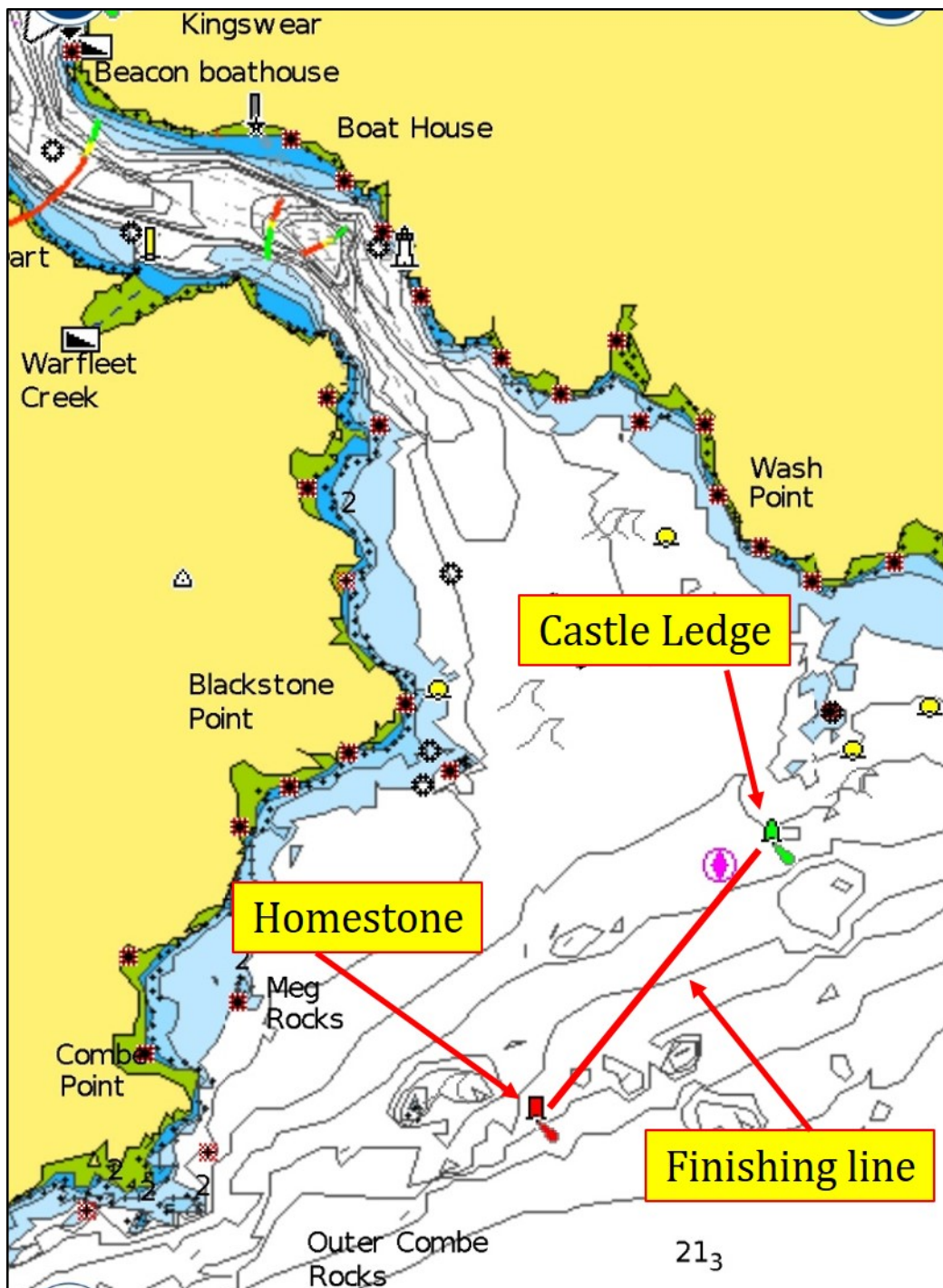


An expanded view, showing Harbour Buoys No1 and No2 more clearly:



ADDENDUM B

CHARTLET OF THE ENTRANCE TO DARTMOUTH, SHOWING THE LOCATION OF THE FINISH LINE
(Not to be used for navigation)



ADDENDUM C

COWES – DARTMOUTH FEEDER RACE: FINISH TIME DECLARATION FORM

YACHT			
SAIL NUMBER		SKIPPER	

DATE	JULY 2024
FINISH TIME (BRITISH SUMMER TIME)	

	Boat name or sail number
BOAT AHEAD AT FINISH	
BOAT ASTERN AT FINISH	

DECLARATION FORM - USE OF ENGINE IN GEAR

DATE	JULY 2024		
YACHT		SKIPPER	

TIMES OF FIRST USE OF ENGINE IN GEAR WHILST RACING:

From:	BST	To:	BST
Reason for use of engine:			

TIMES OF SECOND USE OF ENGINE IN GEAR WHILST RACING:

From:	BST	To:	BST
Reason for use of engine:			

TIMES OF THIRD USE OF ENGINE IN GEAR WHILST RACING:

From:	BST	To:	BST
Reason for use of engine:			