



CLASSIC CHANNEL REGATTA

Dartmouth•St Helier•Paimpol



Saturday 29th June - Saturday 6th July 2019

GENERAL INFORMATION

TIMINGS

Friday – June 28th

Registration & Welcome Day

- 12.00 – 19.00: Registration at RDYC Sailing Office
- 19.00: Briefing for Dartmouth Races at RDYC
- 19.30: Welcome drinks Co- sponsored by Dartmouth Chandlery and the RDYC followed by crew suppers at RDYC (supper numbers limited – book direct with RDYC at barsupervisor@royaldart.co.uk or 01803 752272) (see below)

Saturday – June 29th

Dartmouth Classic Weekend – Day 1

- 08.00 – 10.00: Late registration at RDYC Sailing Office
- 10.30: Parade of Sail (instructions will be given separately at the briefing at 1900)
- 12.00: First Start Pantaenius Races
- 20.00: Evening supper party with music in the Old Market Square
- 23.00 – 24.00: Late night water taxi service

Sunday – June 30th

Dartmouth Classic Weekend – Day 2

- 10.30: Salcombe Gin Start Bay Race – first start
- 17.30: Prizegiving at Royal Dart Yacht Club
- 18.30: Al Fresco supper at RDYC (numbers limited, book direct with RDYC)

Monday – July 1st

Lewmar Classic Channel Race Dartmouth – St Helier start day

- 09.00 – 09.30: Late registration for the Lewmar Classic Channel Race Dartmouth – St Helier
- 10.00: Briefing for the Lewmar Classic Channel Race Dartmouth – St Helier
- 13.00: First start of the Lewmar Classic Channel Race Dartmouth – St Helier

Tuesday – July 2nd

Lewmar Classic Channel Race Dartmouth – St Helier finishes off St Helier

- 14.00 – 17.00: Registration for boats joining in St Helier.
- 14.00 – 17.00: For all boats: Instructions and sequence pennants will be issued for entry into Paimpol.
- **For new entrants into the CCR individual posters will be issued for display in Paimpol. (Can those boats that have entered the Regatta before, please make sure they bring the ones they have been issued before).**
- Booking for excursions in Paimpol. (See page 11)
- 17.00: Briefing Classic St Helier – Paimpol Passage Race (on quay in St Helier)
- 19.00: Prize giving for Lewmar Classic Channel Race on the quayside.
- 20.00: Street Food Buffet supper on the quayside.

Wednesday – July 3rd

Classic St Helier – Paimpol Passage Race

- 08.00: First start of the Classic St Helier – Paimpol Passage Race
- Classic St Helier – Paimpol Passage Race finishes off Paimpol late afternoon/early evening
- Entry to harbour from 19.27 – 20.27
- Welcome drinks on the quayside in Paimpol

Thursday – July 4th

Interlude Day

Rest & Excursions day in and around Paimpol – details of Excursions will be given to all competitors.

17.00 – Briefing for La Course du Tour de l'Île de Bréhat in the Salle des Fêtes - followed by the CRAB Association AGM – Followed by drinks before the Prizegiving.

17.45 Approx. following the AGM and drinks: prizegiving for the St Helier – Paimpol Passage Race.

18.30: Boats 'At Home' Cocktail Hour (for those boats that wish to entertain other crews).

Friday – July 5th

La Course du Tour de l'Île de Bréhat Day

- 0730 Picnics issued on quay side
- 08.30: First boats lock out of harbour
- 10.30: La Course du Tour de l'Île de Bréhat. – first start
- 1300 Picnic off Île de Bréhat
- 1600 Start of race back to Paimpol
- 19.00 – 19.45: Danse des Classiques off Paimpol
- 20.15: Boats Rendezvous for Parade of Sail
- 21.00 – 22.00: Boats transit lock into Paimpol port
- 21.30 - Dinners available in some Paimpol restaurants (which are staying open for us) See Late Opening Paimpol. Crews are advised to book (see contact)

Saturday – July 6th

Finale Day

- Programme of Activities in Paimpol – including international Boules and Cricket matches - details will be given to all competitors.
- Regatta village on quayside open all day
- 18.00: Final Prize giving on quayside for Tour de Bréhat Race, Danse des Classiques and Dubarry overall results.
- 20.00: Supper and party in Salle des Fêtes
- 23.30: Finale Fireworks on quayside.

RDYC Menus Classic Channel Regatta

Friday Dinner

Chicken Tikka Masala, Aloo Gohbi, Saag Aloo, Westcountry Berry Cheesecake Or Apple and
Ginger Steamed Sponge Pudding with Custard

Cost £12.50. Booking required as space limited to 120.

Book and Pay Directly with the RDYC hospitality@royaldart.co.uk or call 01803 752272.

Breakfast

All days 0730-0930 Bacon/Sausage and/or egg Rolls Tea/Coffee

Cost £5 each No booking required.

Al Fresco Supper

Sunday 30th 1830

Burger and table of assorted toppings and fillings, veggie burgers available
Tossed and compound salads. Creme Brûlée with Shortbread Fingers or Bread and Butter
Pudding with Custard

Cost £12.50 each Book and Pay Directly with RDYC

General

Dartmouth Ferries and Water Taxis

There is a water taxi service run by the harbour that runs from 0800 to 2300 but will run to 2400 on Saturday night (29th). If you are later than this after the dinner in the Market Square you may find you will not be able to get back to your boat until much later (if at all) as only one of the commercial taxis will run after 2400 and it may have other (non regatta) customers to service. The harbour water taxi service is free, from competitors boats on non walk ashore pontoons or moorings to either the Dartmouth Town Steps or the Royal Dart Yacht Club. In some circumstances the drop off on the Kingswear side will be to the Darthaven visitor pontoon. Calls to the water taxi may be made on Ch 69 but at busy times they will be running continuously.

The water taxis will not pick up competitors between the walk ashore pontoons in Dartmouth and the walk ashore pontoons in Kingswear.

If you need to get from the Dartmouth to the Kingswear side and vice versa you can either take the passenger ferry from the town quay or the lower car ferry (see map). Both of these run to very close to the RDYC and run a service of a minimum of every 15 minutes. The passenger ferry stops however between 1830 and 1900 to allow for meal/crew rotation.

If you are transiting from Dartmouth to Kingswear and vice versa remember that the last ferries run at approx 2250.

Please allow extra time at the busy points (especially before briefings and dinners).

Please also note the cut off time of 2400 for the Saturday evening water taxi. There is a dinghy dock just north of the town quay for anybody who wishes to use their dinghies.

Dressing Overall

We very much hope that all the regatta boats with a full set of Code Flags will dress overall while moored in the harbour during the regatta as it adds so much colour and atmosphere, both for the crews and for those ashore. You will also be given a regatta pennant which we ask all boats to fly when in port throughout the regatta.

Group Flags & Sail Numbers

On registration you will be given a Group flag to fly whilst racing. Please do not fly another class pennants which you may have used in previous regattas. We would refer you to the NOR and SI's in respect of sail numbers. If you don't have one you must let the organisers know and you will be

issued with a set of numbers at a cost of £35 Or €40. Failure to show numbers will get a competitor scored DNS.

Dress Code

Dress Code for all social Events is strictly informal.

Facebook And Instagram

Like us and follow us on Facebook for the latest news, pictures and race results and upload your photos on Instagram :

www.facebook.com/ClassicChannelRegatta <https://www.instagram.com/classicchannelregatta/>

Polo Shirts, Caps, Fleece Gilets & T-Shirts

The regatta's personalized clothing supplier, Snappy Crab, have a very good range of clothing embroidered with the regatta logo which is available to order for collection at registration in Dartmouth. The Polo shirts and gilets can also have your boat's name on them. Full information and ordering at: www.snappycrab.co.uk/products/90/classic-regatta. A regatta t-shirt will also be available to buy from Friday 28th June at the regatta.

Registration, Regatta Office, Welcome.

Registration will be at the Regatta Office at the Royal Dart Yacht Club on the Kingswear shore from 12.00 to 20.00 on Friday. For later registration the office will be open Sat & Sun 08.00-10.00 and Mon 09.00-10.00. Outside these times you can phone the office on +44 1803-752704 or +44 7811 464748. Each skipper should register as soon as convenient on Friday. On registering you will receive: General Instructions, Sailing Instructions, Crew Passes (wristbands), and group pennant, tickets for all meals booked during the week, and a Goodie Bag.

You will be given a crew list form to complete before the start of the Channel Races. This will require the names and emergency contact phone numbers of all your crew, so it may help you to collect this information in advance and have it ready. Once your crew have received their crew wristbands they will be able to use the facilities and attend the events laid on for the regatta. The wristband will also entitle the holder to the concessionary rate of 50p on the passenger ferry (not the Lower car ferry) between Kingswear and Dartmouth. So register as soon as you can. The first meeting will be the Skippers' Briefing at the Royal Dart Yacht Club at 19.00 on Friday, followed by the Welcome Reception for all crews at 1930.

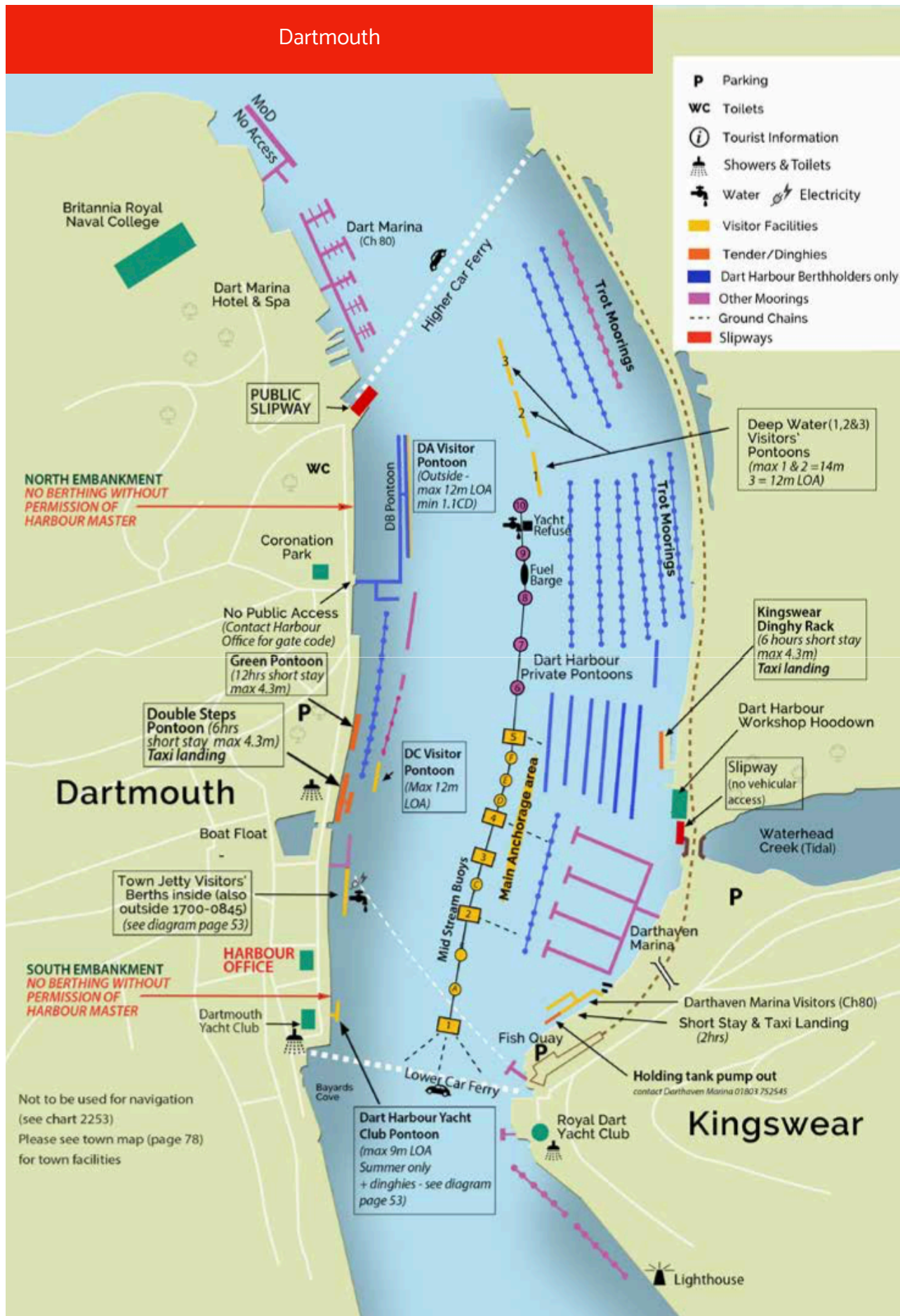
Parade Of Sail Out Of Dartmouth – Saturday at Approx. 10.30

This is intended to be an informal, but orderly, exodus from the river on Saturday morning which is much appreciated by those watching ashore - it is our thank you to the town for their hospitality and support. Please be on board and ready to slip the mooring by 10.15 so you are underway and ready to move by 10.30. There is no set order for the boats, a lead boat will lead the way soon after 10.30, so just find a slot and follow the boat in front. The route for the parade from the regatta trots is first up-river on the east side to a turning mark (details of this will be given at the Friday evening briefing) positioned in the fairway a little downstream of the Higher Ferry, which is to be left to port. Then proceed downstream keeping towards the Dartmouth shore and then out of the river. Do not cross the path of the Higher Ferry and take care when in the vicinity of the Lower Ferry, it will continue to have right of way so boats may have to round up, stop or alter course to avoid it. The Harbourmaster has instructed that engines must be kept running on standby and only those sails that allow the boat to maintain full manoeuvrability may be set (so certainly no spinnakers) until boats are downstream of the Lower Ferry. More information will be given at the Friday Briefing.

Heavy Weather Arrival in Paimpol

In the event of heavy weather, boats can seek refuge at St Quay Portrieux while awaiting suitable conditions to enter Paimpol. The approach to Paimpol is well sheltered from the west, so only a strong NE to SE wind will cause a problem. If that happens it may obviously be necessary to amend the berthing instructions

Port Plans



Berthing

Dartmouth

On entering the harbour and approaching the lower ferry call Dartnav on channel 11 and ask for berthing instructions. Please be aware that the ferries have priority.

Berthing is arranged by the Dart Harbour Authority on the Mid stream mornings and Mid stream pontoons. (See plan) These are not walk ashore but will be served by a free water taxi service from competitors boats to either the Dartmouth Town Steps or the Royal Dart Yacht Club. Calls to the water taxi may be made on Ch 69 but at busy times they will be running continuously. Some walk ashore facilities are available and competitors have been allocated those specifically. If you have not been notified that space has been allocated to you, you should not attempt to berth there.

On arrival you will be guided to a mooring by Harbour staff. (Call channel 11). We would ask you to co-operate with the berthing staff who are there solely to assist you and ensure you are berthed securely. If you can ensure you have sufficient mooring lines and fenders ready that would be appreciated. (long lines will be needed for the mid stream buoys).

Sufficient moorings have been reserved for all competitors. However additional walk ashore berths are available on the outside of the town quay but these may only be accessed from 1700-0845 as they are used during the day by passenger ferries. Do not berth on the north end of the town quay which is used day and night (to 2300) for the foot ferry to Kingswear.

Dartmouth is not tide restricted

St Helier

There are strict rules governing the use of the approach channels into the Albert Pier. The area is governed by VTS and there is a traffic light system which will regulate entry and exit when large vessels are entering and leaving. Do not block the entrance to either Victoria or Albert Harbours whilst waiting to enter or leave and do not impede any commercial vessels. Speed is limited to a max 5 knots. Listen out on Channel 14. On the 2nd of July there is significant traffic programmed during the morning entering and departing.

All regatta boats will be rafted together on the Albert Pier holding area pontoon at the entrance to the main marina (see plan). It will be walk ashore but you may be stacked up to 6 deep. If you arrive before 0600 then please find a slot and stay there until otherwise directed by harbour staff later in the morning. After 0600 you should await instructions from harbour staff for berthing who will be in attendance in dories and ashore. If you can ensure you have sufficient mooring lines and fenders ready that would be appreciated. The waiting pontoon is not tide restricted.

Paimpol

This will be in Bassin 1 harbour and you will be directed to a specific place within the harbour by Marina Staff assisted by local Paimpol CCR volunteers. Please adhere strictly to the entry procedure that you will be given in St Helier by the Paimpol CCR team. Paimpol is tide restricted and if you miss the lock times you will not be able to enter. There are no waiting facilities immediately outside and if you miss the last lock you will need to go back out the La Jument area (probably on a falling tide) - **so if you are not sure you are going to make it then you are advised to wait for the next tide.**

Paimpol Tide & Lock Opening Times.

All Times French Summer Time ie: UT + 2 hours. The Lock is open from HW - 2h30m to HW + 2h20m. The sill is 4.84m above Chart Datum. When the height of the Tide exceeds 9.8m there is a period of 'free flow' in the lock (both gates open) for approximately half an hour before High Water. This provides a good opportunity to get a large number of boats through the lock quickly. The lock can take approximately 20 boats per locking. Each locking cycle takes about 20 minutes to complete. It follows that, without a 'free flow' period, it will take a minimum of 1 hour to lock through 60 boats therefore please make maximum use of the free flow times. Failure to lock out in time will score you "DNS" as the start of the Brehat Race will not be delayed.

Berthing Fees

Berthing fees are included in the registration fees for the three nights of the 28th-30th in Dartmouth, the night of the 2nd in St Helier and the 4 nights of 3rd to the 6th in Paimpol. If you arrive or depart outside of these times any harbour fees will be for your account.

Fuel

Dartmouth - Available from the Fuel Barge (see plan). Available daily from 0800-1800. Attended service.

St Helier - Available from 2 places in the Victoria/Albert Basins (see plan). The pumps are self service and operated by credit card.

Paimpol - Available in front of the Capitainerie in Bassin 2 during the day.

Water

Dartmouth - Available on the Town Quay and DYC pontoons.

St Helier - Available on the Albert Pier waiting pontoon.

Paimpol - Available on all pontoons where competitors will be berthed.

Electricity

Dartmouth - Available on the Town Quay.

St Helier - Available on the Albert Pier waiting pontoon.

Paimpol - Available on all pontoons where competitors will be berthed.

Toilets and Showers

Dartmouth - Public toilets available on the Town Quay opposite the Green Pontoon. Toilets and Showers available at the RDYC and DYC. Tokens for the showers in the DYC are available to purchase from the water taxis.

St Helier - Available on the East Side of the St Helier Marina and on the East side of the Elizabeth Marina. (Marked on chart). Codes will be given on arrival.

Paimpol - Available in the Capitainerie.

Communication

Dartmouth - Road transport (bus and taxi) is available to Totnes main rail station. The nearest airport is Exeter (1 hour) and Bristol (2 Hours)

St Helier - Ferries available to other Channel Islands, the UK, Cherbourg and St Malo. Flights to the UK and France.

Paimpol - Road and Bus transport to the French Rail system (nearest station Guingamp). The nearest ferry port is Roscoff. (100 minutes and €250 by taxi)

Shopping

Dartmouth - Many shops including Supermarkets (M&S and the Co-Operative) are available within walking distance of the town quay.

St Helier - Many shops including Supermarkets are available within walking distance of the Albert Pier. (Northwards from the Harbour)

Paimpol - Shops abound and are available within walking distance of the port. Carrefour City and E.Leclerc are sponsors of the regatta.

Repairs and General Chandlery

Dartmouth

Our Silver Sponsor **Dartmouth Chandlery** has a well stocked Chandlery in Newcomen Road close to the Harbour Office. + 44 1803 839292

Lee Rogers Rigging can help with any rigging repairs +44 1803 835 912.

Sail Repair is available from **Dart Sails & Covers** +44 1803 839196. They are towards the top of the town but will come down to the harbour to assist.

Baltic Wharf Repairs can assist with any general repairs required +44 1803 867474. New Wave Marine can assist with engine repairs +44 1803 840223 or +44 7761 436585

For all types of repairs **Darthaven Marina** can assist on +44 1803 752242. For stainless steel and other metal repairs **Hercules Engineering** on +44 1803 833736 can assist.

All the above are sponsors of the regatta.

There are other places for engine, general maintenance and other repairs. (see port guide)

St Helier

The Port Guide contains a lot of information on Chandlery and Repairs, many of which are situated around the St Helier Yacht Club (see plan). There is a good boatyard in Port Colette

Paimpol

There are good facilities to the east of the harbour (Quai de Kerno - see map) with well stocked Chandlery's and Repair facilities.

For Sail Repair contact **Voilerie** on +33 2 96550025. For Chandlery contact **Dauphin Nautic** +33 2 96 22 0172 and **AcScion Peche** +33 2 96 22 19 07 For general repairs (wooden boat specialist) contact **Charpentiers Paimplois** +33 2 96 22 0927

All the above are sponsors of the regatta.

Restaurants

Dartmouth - Many restaurants, bars and pubs are available around the town within easy walking distance of the Town Quay. Special reference is made to Café Alf Resco who are sponsors of the Regatta and located close to the lower ferry on the Dartmouth side. Their coffee, croissants and hot breakfasts are legendary.

St Helier - Many restaurants, bars and pubs are available around the town within easy walking distance of the Town Quay. The St Helier Yacht Club also has a good bar and serves food through the day. (It is also situated close to the main chandleries).

Paimpol - The Port area has a lot of good restaurants and bars. Many of them are sponsors of the Regatta and are listed here. It is highly recommended that competitors book for the those late arrival evenings as soon as possible. Those that will be open past the last lock in, are listed below.

CLASSIC CHANNEL REGATTA

Restaurants & Bars - Sponsors



Restaurants Sponsors						
Numéro sur plan	Nom et adresse	Adresse mail N° de téléphone Type de restaurant	Nb de services par repas	Capacité	Dernier service déjeuner	Dernier service dîner
1	Château de Boisgeline 22290 Préhédél	contact@mathieu-kargoulais.com 02 96 22 37 67 Gastronomique	1	40	13h30	21h00
2	La Marne 30 rue de la Marne	hoteldelamarne@orange.fr 02 96 16 33 41 Traditionnel				
3	Le Penn Ty 20 rue des Huit Patriotes	02 96 55 11 41 Crêperie	«En Continu» All day long	30		22h00
4	Le 18 18 rue des Huit Patriotes	le18paimpol@yahoo.fr 09 72 82 82 13 Traditionnel		50	13h30	22h00
5	Crêperie les Alizés 14 rue des Huit Patriotes	02 96 22 03 90 Crêperie - Grill	«En Continu» All day long	100		21h00
6	Ty Krampouz (Morel) 11 Place du Martray	02 96 20 86 34 Crêperie - Brasserie			14h00	22h00
7	Le Riva 33 quai Morand	contact@restaurantleriva.com 02 96 20 43 08 Traditionnel - Pizzeria	2	100	14h30	23h00
8	L'Escale 27 quai Morand	02 96 20 81 88 Crêperie - Moulures (mussels)				23h00
9	Le Neptune 23 quai Morand	02 96 20 53 03 Brasserie - Traditionnel	«1 à 2»	150	14h30	21h30
10	Hôtel K'loys - Tonton Guy 21 quai Morand	hotelkloys@orange.fr 02 96 20 40 01 Traditionnel-Crêperie-Brasserie	2	80	15h00	22h00
11	L'Islandais 19 quai Morand	02 96 20 93 80 Traditionnel-Crêperie-Brasserie	«En Continu» All day long	120		23h00
12	Restaurant du Port 17 Quai Morand	restaurantduport@wanadoo.fr 02 96 20 82 76 Traditionnel	2	70		21h30
13	Quai Ouest 11 quai Morand	lequaiouest22@orange.fr 02 96 20 72 30 Traditionnel	2	60	14h30	22h00
14	Les Chalutiers 5 quai Morand	02 96 20 82 15 Brasserie	«En Continu» All day long	120		22h30
15	Glacier Adam Place de la République	02 96 22 29 19 Glacier/ Salon de Thé - (Ice cream/Tee room)	«En Continu» All day long		9h30 / 23h00	
16	La Saladerie 6 bis quai Duguay Trouin	lemonpaimpol@orange.fr 02 96 20 58 41 Salades- Tartines-Sandw- Paninis	2	20		22h00
17	Au bistro gourmand 12 quai Duguay Trouin	pierrette.nachez@live.fr 02 96 20 42 09 Traditionnel - Crêperie - Pizzeria	«En Continu» All day long	110		22h00
18	Le Terre-Neuvas 16 quai Duguay Trouin	gaetanbraut@orange.fr 02 96 55 14 14 Traditionnel		80		23h30
19	Aux vieux gréments 10 quai de Kernoa	benjamincharpentier@neuf.fr 02 96 16 17 63 / 06 04 40 83 77 Crêperie	2	70		21h30
20	La Kriée 10 quai de Kernoa	02 96 20 81 08 Traditionnel et produits de la mer	2	60		22h00
21	La Cabane sur le Quai quai de Kernoa	kerandre22@gmail.com 02 96 55 58 82 Traditionnel - Bar à tapas	«En Continu» All day long	50		23h00
22	L'Ecluse Quai Armand Dayot	ecluse.paimpol@orange.fr 02 96 55 03 38 Traditionnel	2	140		22h30
Bars Sponsors						
A	Le Cargo	15 rue des 8 Patriotes	02 96 20 72 46	16h00 / 02h00		
B	Le Pub	3 rue des Islandais	02 96 20 82 31	23h00 / 05h00		
C	Le Corto Maltes	11 rue du Quai	02 96 22 05 76	jusqu'à (up to) 02h00		
D	L'Epoque	3 quai Morand	02 96 20 82 14	06h00 / 02h00		
E	La Paillotte	10 quai Duguay Trouin		10h00 / 02h00		
F	La Falaise	2 quai de Kernoa	02 96 20 89 79			
Epicerie						
	Carrefour City	11, rue Saint Vincent	02 96 20 76 22	7h00 / 22h00		



Visites du jeudi 4 juillet matin - Visits Thursday July 4th morning.

Les personnes désirant participer à l'une des 3 visites organisées le matin peuvent choisir entre :

People wishing to participate in one of the 3 morning visits may choose between:

La visite guidée du « Port dans la Ville »,

par M. Pochard, ancien maire de Paimpol (bilingue français-anglais). Promenade pédestre. Voir la brochure « A Harbour in the City » de l'Association des Amis du Musée de la Mer. Durée environ 1h. Rendez-vous devant la maison des Plaisanciers à 10h00. Participation : 3 €/personne. Maximum 30 personnes.

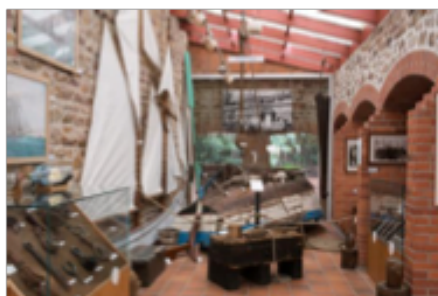
The guided tour of the 'Port' in the City',

by M. Pochard, former Mayor of Paimpol (bilingual French-English). Pedestrian walk. See the brochure "A Harbour in the City" of the Association of friends of the Museum of the sea. Duration 1 hour. Go to the 'maison des Plaisanciers' at 10:00. Participation fee: €3 / person. Maximum of 30 people.



Le

Le
de la



Musée de la Mer <http://museemerpaimpol.fr/>

(guide bilingue français-anglais).
Le musée de la mer retrace la grande époque de la pêche à la morue et traite la pêche « à l'Islande », puis évoque quelques aspects maritimes dont les Paimpolais ont été les acteurs-témoins au cours des 19^{ème} et 20^{ème} siècles. Un hall est dédié à ce type de navires, du voilier jusqu'aux vaisseaux contemporains, en passant par les paquebots. Durée environ 1h. Rendez-vous devant la maison des Plaisanciers à 10h30. Participation : 3 €/personne. Minimum 20 personnes, maximum 30 personnes.

The

Museum of the Sea (bilingual guide French-English).

The sea Museum retraces the great era of the cod fishery and fishing "in Iceland", and evokes several maritime aspects that the sailors of Paimpol have witnessed and were actors during the 19th and 20th centuries. A hall is dedicated to different type of ships, from sailing boat to contemporary vessels, including ocean liners. Duration 1 hour. Go to the 'maison des Plaisanciers' at 10.15, Walk to the Museum (5 min). Participation fee: €3/person. Minimum of 20 people, maximum of 30 people.

La cidrerie Guillou-Le Marec <http://www.cidre-paimpol.com/>

à travers l'exposition qui retrace son histoire par des photos et des livres, ainsi que du vieux matériel cidricole. Un film retrace les étapes de l'élaboration du cidre, du verger à la bouteille « Bolée de Paimpol ». M. Yves Le Marec, se fera un plaisir de vous guider lui-même dans la cidrerie et le musée, et vous proposera une dégustation de ses spécialités. Un accompagnateur interprète assurera la traduction en anglais. Durée environ 1h30. Rendez-vous devant la maison des Plaisanciers à 9h30 (navettes minibus à disposition). Participation : 3 €/personne. Minimum 16 personnes, maximum 32 personnes.

The Guillou le Marec cider House

The exhibition traces the history of the cider house via pictures and books, as well as old cider equipment. A film traces the processing of the cider « Bolée de Paimpol » from the orchard to the bottle. Mr. Yves Le Marec, will gladly guide you himself in the cider House and Museum, and will offer a sample tasting of his specialties. An attendant interpreter will provide the English translation. Duration approximately 1.5 hour. Go to the 'maison des Plaisanciers' at 9:30, travel by mini bus (2 possible shuttles depending on the number of participants. Participation fee: €3/person. Minimum of 16 people, maximum of 32 people.





Visites du jeudi 4 juillet après-midi - Visits Thursday July 4th afternoon.

Les personnes désirant participer à l'une des 3 visites organisées l'après-midi peuvent choisir entre :
People wishing to participate in one of the 3 afternoon visits may choose between:

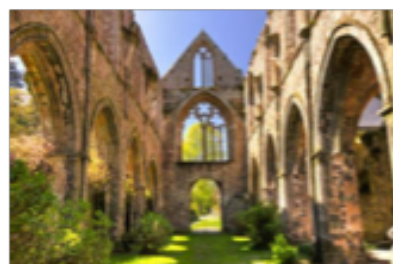
L'abbaye de Beauport <https://abbayebeauport.com/>

(guide bilingue français-anglais).

Cette abbaye maritime fondée en 1202 dans l'anse de Paimpol, domine la mer et l'île de Saint Riom. La perspective est époustouflante. Ce lieu connut six siècles d'histoire monastique, et doit sa réputation au caractère grandiose de ses ruines, et à sa situation exceptionnelle en bord de mer. Elle est classée au titre des Monuments historiques depuis 1862 et le site protégé par le Conservatoire du littoral.

Durée environ 1h30 à 2h. Rendez-vous devant la maison des Plaisanciers à 13h30 (navettes minibus à disposition)

Participation : 5 €/personne. Minimum 16 personnes, maximum 32 personnes.



The Abbey of Beauport (bilingual guide French-English)

This maritime Abbey founded in 1202 in the Cove of Paimpol, overlooks the sea and the island of St Riom. The view is breath taking. This place knew six centuries of monastic history and owes its reputation to the grandeur of its ruins, and its exceptional location by the sea. It is classified as a Historical Monument since 1862 and the site is protected by the "Conservatoire du littoral".

Duration approximately 1h30 to 2h, travel by mini bus (2 possible shuttles depending on the number of participants). Go to the 'maison des Plaisanciers' at 1:30 pm. Participation fee: €5 / person. Minimum of 16 people - Maximum of 32 people.



La visite du Vieux Paimpol <http://www.ville-paimpol.fr/centre-ville-historique/>

(guide bilingue français-anglais).

Découvrir le centre-ville historique de Paimpol, c'est entrer dans l'histoire de la cité des Islandais. Ses ruelles étroites, ses maisons d'armateur imposantes et ses rues pavées vous plongent à l'époque des corsaires et des pêcheurs d'Islande..

Durée environ 1h30 à 2h. Rendez-vous devant la maison des Plaisanciers à 14h.

Participation : 5 €/personne. Minimum 15 personnes, maximum 50 personnes.

Visit of the old Paimpol (bilingual guide French-English).

Discovery of the historic city Centre of Paimpol, is to enter into the history of the city of Icelanders. Its narrow streets, its stately ship-owner houses and cobblestone streets plunge

you at the time of pirates and fishermen from Iceland

Duration approximately 1h30. Go to the la maison des Plaisanciers ' at 2:00 pm.

Participation fee: €5 / person. Minimum of 15 people - Maximum of 50 people.

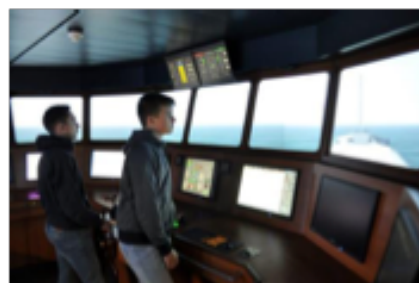
Le Lycée Maritime Pierre Loti <https://www.lycee-maritime-paimpol.com/>

[exposés par les professeurs du Lycée, avec traduction en anglais] . Les domaines d'enseignement concernent la conduite et l'exploitation des navires (navire de commerce, de pêche), la maintenance des équipements du navire, et la maintenance des navires de plaisance.

Trois ateliers pour cette visite: Le simulateur de navigation, le matelotage et ramandage, la mécanique marine.

Durée environ 2h. Rendez-vous devant la maison des Plaisanciers à 13h45.

Participation : 5 €/personne. Minimum 15 personnes, maximum 30 personnes.



The Paimpol Maritime high school Pierre Loti

(Presentations by teachers of the school, with English translation).

The areas of teaching are the pilot and operation of ships (merchant vessel, fishing), maintenance of the ships equipment, and the maintenance of pleasure craft.

Three workshops for this visit: Seamanship and net maintenance / The navigation Simulator / Marine machinery mechanics.

Duration about 1h30 to 2h, hours. Go to the la maison des Plaisanciers à 1:45 pm, 5 minutes' walk to reach the school.

Participation fee: €5 / person. Minimum 15 people Maximum of 30 people

Platinum Partner

LEWMAR®

Gold Partners

dubarry
of Ireland

SALCOMBE
GIN®

PANTAENIUS
Sail & Motor Yacht Insurance



Silver Partners



VALEPORT

Copper Partners

DALMARD
MARINE



EXPOSURE
GLAS

Vedettes de
Bréhat



Wooden Ships
International Yacht Broker Inc.

SALCOMBE
BREWERY CO.

Bronze Partners

Ac'Scion Pêche
Armour Greément
Baltic Wharf
Boatyard
Baltic Wharf
Repairs
Blueriver Cottages
Bolée de Paimpol

Bretagne Marine
Bricomarche
Cafe Alf Resco
Carrefour City
Classic Marine
Cras Nautique
Darthaven Marina

Dauphin Nautic
Charpentiers
Paimpolais
Hercules
Engineering
Intersport
John Moody Marine
Timber
E. Leclerc

Lee Rogers Rigging
Marchand Petit
Mathieu Kergourlay
New Wave Marine
Paul Barclay
Designs
Sharpham Cheese
& Wine

Vollerie Paimpol
Mark Lobb Wild
Food
Wollens

The Classic Channel Regatta is supported by

Dart Harbour



JERSEY
MARINAS

Guingamp
Paimpol
ACCOMMODATION

