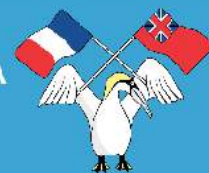


# THE CLASSIC CHANNEL REGATTA

DARTMOUTH - ST PETER PORT - PAIMPOL



*Saturday 8th July - Friday 14th July 2017*

(With Epilogue Day Saturday 15th July)

## GENERAL INSTRUCTIONS

### Classic Channel Regatta

Comprising

#### The Dartmouth Classics

The Classic Channel Race Leg 1 Dartmouth to St Peter Port

The Classic Channel Race Leg 2 St Peter Port to Paimpol

The Classic Round Brehat Race

Organising authority

Classic Channel Regatta Limited

supported by

The Royal Dart Yacht Club, the Loguivy Canot Club & the Guernsey Yacht Club



## WELCOME TO THE CLASSIC CHANNEL REGATTA 2017

# GENERAL INFORMATION & INSTRUCTIONS FOR DARTMOUTH - ST PETER PORT - PAIMPOL

### 1. GENERAL

The charts listed below are the UKHO standard charts needed for the regatta. This is a guide only and the organisers take no responsibility for omissions or errors. It is each skipper's sole responsibility to ensure that all necessary charts, corrected up-to-date, are carried on board.

England - UKHO Chart Nos:

- 2253 Dartmouth Harbour
- 1634 Salcombe to Brixham (covering Start Bay)
- 26 Harbours on the South Coast of Devon (covering Torbay)
- 2656 English Channel Central Part

France - UKHO Chart Nos:

- 2028 Ile De Brehat yo Plateau Roche Douvres
  - 2027 Ile Grande to Ile De Brehat
- or SHOM Chart No's
- 7127 Abords de Ile de Brehat
  - 7153 Ile de Brehat au Roche Douvres.

Channel Islands - UKHO Chart Nos:

- 2669 Channel Islands and Adjacent Coast of France
- 3654 Guernsey, Herm and Sark
- 807 Guernsey and Herm

Also recommended for southern approach to Paimpol and in case of need to seek refuge in St Quay Portrieux:

- 2029 Le Ost Pic to Cap Frehal
- or SHOM 7154 - Ile de Brehat au Cap Frehel

We are making arrangements with Dartmouth Chandlery in Dartmouth to get stock in of Imray Chart 2510.5 which covers Ile de Brehat , We will advise when this is available. Currently it is only available as part of a folio and not on its own. Additionally Dartmouth Chandlery also holds stocks of a folio of charts NV Atlas France FR3 which includes the Ile De Brehat area. To ensure stocks available please order in advance,

### 2. DRESSING OVERALL, CLASS FLAGS & SAIL NUMBERS

We very much hope that all the regatta boats with a full set of Code Flags will dress overall while moored in the harbour during the regatta as it adds so much colour and atmosphere, both for the crews and for those ashore. You will also be given a regatta pennant which we ask all boats to fly when in port throughout the regatta.

Classes 1&2 and and 3&4 will be divided by handicap into divisions which will determine their starting order when racing.

Class Flags will be as follows (to be flown on the back stay or similar).

Flag B (Bravo) Classes 1&2 - Div1

Flag D (Delta) Classes 1&2 - Div2

Flag E (Echo) Classes 3&4 - Div3

Flag F (Foxtrot) Classes 3&4 - Div4

Boats built before Dec 31st 1968 will be in class 1&2 unless they were factory built production boats which puts them in class 3 or have high tech materials which puts them in class 4 (which will have an additional time penalty when assessing their position for the purposes of allocating prizes). Boats built after that date will be in class 3 or 4. We cannot determine where the divisions will fall until all entries are in at registration, so please have both code

flags for your class on board. Classes are defined on the regatta website ([www.classic-channel-regatta.eu](http://www.classic-channel-regatta.eu)). code flags can also be bought from Dartmouth Chandlery. Those boats without sail numbers on their sails will be required to display them on the guardrails or another visible part of the boat. These can be obtained from Dartmouth Chandlery - Please call for a quote +44 1803 839292.

### **3. DRESS CODE**

Dress Code for all social Events is strictly informal.

### **4. FACEBOOK AND TWITTER**

Like us and follow us on Facebook and stay in touch via Instagram for the latest news, pictures and race results:



[www.facebook.com/ClassicChannelRegatta](https://www.facebook.com/ClassicChannelRegatta)



@classicchannelregatta

### **5. POLO SHIRTS, CAPS, FLEECE GILETS & T-SHIRTS**

The regatta's personalized clothing supplier, Snappy Crab, have a very good range of clothing embroidered with the regatta logo which is available to order for collection at registration in Dartmouth. The Polo shirts and gilets can also have your boat's name on them. Full information and ordering at: [www.snappy-crab.co.uk/products/90/classic-regatta](http://www.snappy-crab.co.uk/products/90/classic-regatta). A regatta t-shirt will also be available to buy from Friday 10th July at the regatta.

### **6. MÉDECINS SANS FRONTIÈRES**

We have again chosen MSF as the charity we want to support at this year's regatta. Information on their work will be in the goodie bags and the link to their website is: [www.msf.org.uk](http://www.msf.org.uk).

## 2017 CLASSIC CHANNEL REGATTA PROGRAMME

### Programme

#### *Friday – July 7th*

- 12.00 – 20.00 – Registration at Royal Dart Yacht Club
- 19.00 – Briefing for Dartmouth Races at RDYC
- 19.30 – Welcome drinks sponsored by Dartmouth Chandlery  
followed by crew suppers at RDYC (numbers limited)

#### *Saturday – July 8th*

- 08.00 – 10.00 Late registration at RDYC
- 10.30 – Parade of Sail
- 12.00 – Racing in Start Bay off Dartmouth – first start
- 20.00 – 24.00 – Evening Supper Party with music in the Old Market Square
- 23.00 – 01.00 Late night water taxi service

#### *Sunday – July 9th*

- 10.00 – Long Start Bay Race – first start
- 16.00 - Cream teas served at RDYC
- 17.30 – Prizegiving at Royal Dart Yacht Club
- 18.30 – Barbecue available at RDYC (numbers limited)

#### *Monday – July 10th*

- 9.00 – 10.00 Late registration for Channel Race
- 10.00 – Briefing for the Channel Race & CRAB association general meeting at The Guildhall  
in Dartmouth
- 14.00 – First start of Channel Race – 1st stage to St Peter Port

#### *Tuesday – July 11th*

- Channel Race 1st stage finishes off St Peter Port
- 14.00 – 17.00 Registration for boats joining
- 17.00 – VHF Briefing for Channel Race stage 2
- 18.00 – Reception for crews at Guernsey YC
- 19.00 - Guernsey YC offering 'one pot supper' for up to 300.
- 21.00 – Party at Guernsey YC

#### *Wednesday – July 12th*

- 09.00 – First start of Channel Race – 2nd stage to Paimpol  
Channel Race 2nd stage finishes off Paimpol
- 20.15 – First lock in for first entries into Paimpol
- 21.04 – 22.04 Freeflow in lock into Paimpol with bagpipes on the lockside  
Welcome drinks on the quayside

#### *Thursday – July 13th*

- Round Île de Bréhat Race Day
- 07.30 - Picnic distribution on quayside
- 07.45 – Briefing by VHF
- 08.00 – First boats lock out of harbour. (Please note Free Flow is 09:26-10.26 and as many boats as possible should leave before the free flow, especially those on the outside of the rafts)
- 11.00 – Île de Bréhat Race – first start  
Picnic off Île de Bréhat
- 15.30 – 17.00 – Danse des Classiques
- 17.00 – 18.30 – Boats proceed to moor at Lézardrieux
- 19.00 – Aperitif and prizegiving on the quayside  
Three evening supper options  
Restaurants in Lézardrieux (Limited numbers. Booking details will be in General Instructions)  
Crews eat aboard boats  
Crews prepare food and take ashore to eat in quayside marquee

*Friday – July 14th*

- 06.45. – First boats leave Lézardrieux to rendezvous positions off La Jument.
- 09.00 – First Boats start Parade of Sail into Paimpol.
- 10.00 – 11.00 – Parade of Sail into Paimpol Harbour to music (transit lock)
- 11.30 – Welcome drinks on quayside
  - Tented village, stalls and music all day – open to public and crews
- 14.00 – 16.00 Boats open to public (optional)
- 18.00 – Prizegiving and aperitifs on quayside
- 20.00 – 23.00 – Crew Supper & Soirée in Salle des Fêtes
- 23.30 – Fireworks

*Saturday – July 15th*

A day to recover and enjoy Paimpol. Activities to be organised by the town and French Classic Channel Regatta team. These include:

- Mini- train trip to L'Abbey Beaufort and coast walk (2 hrs)
- Sea Museum (1 hr)
- Harbour Discovery tour (1 hr)
- Paimpol history tour on foot (1 hr)

Booking for these excursions can be made in Paimpol on Friday 14th July

## PORT INFORMATION

### DARTMOUTH

#### 1. BERTHING

(Please refer to the plan at the end of these instructions).

The boats of the regatta fleet will be moored on the event moorings, a series of buoys in the middle of the river a short way upstream from the Lower Ferry. In addition we have secured exclusive use of the inner berths of the Town Jetty plus the use of the DC Visitors pontoon just to the north of the town quay. The Harbour Authority have agreed that participating boats will pay for the first night and then the next two nights are offered free of charge. Please note that the Inner Berths on the Town Quay are likely to be in demand. These can be reserved by advising [peter@classic-channel-regatta.eu](mailto:peter@classic-channel-regatta.eu), its first come first served.

These Dart Harbour Moorings are the only moorings offered at the regatta rate, if you choose to go onto another mooring or into one of the marinas, you will be charged the normal rates.

Apart from the fact that the regatta moorings are heavily discounted, we would like to encourage you to moor there with the other regatta boats as it keeps the fleet together and makes for a more convivial time.

Boats arriving before Friday will be directed to moorings by Dart Harbour and will be able to move onto the regatta moorings on Friday morning. If the inner Town Quay is free earlier than Friday then by all means berth there but access can only be guaranteed as from Friday morning.

#### 2. ARRIVAL

If you are entering Dartmouth between 07.30 and 21.00 and are not going to a commercial Marina call up Dart Harbour Authority on VHF Channel 11 (call sign 'Dart Nav') and give your boat's name and state you are with 'Dartmouth Classic Regatta'. They will then direct you to a mooring.

If you are entering at night outside these hours, proceed into the river and moor either on the main visitors pontoons or on the CCR mid river berths if you can see an obvious free spot (see harbour guide), or anchor in the designated anchorage. The outside of the town quay is available for use after 1700 and before 0845. Please leave the north end free at all times for the use of the passenger ferry which operates up until 2300 but may go on later in certain circumstances, or anchor. In the morning call 'Dart Nav' on Ch.11 and they will direct you.

For those going to the Marina Berths please liaise directly with those Marinas.

#### 3. REGISTRATION, REGATTA OFFICE, WELCOME.

Registration will be at the Regatta Office at the Royal Dart Yacht Club on the Kingswear shore from 12.00 to 20.00 on Friday. For later registration the office will be open Sat & Sun 08.00-10.00 and Mon 09.00-10.00. Outside these times you can phone the office on +44 1803-752704 or +44 7516638751. Each skipper should register as soon as convenient on Friday. On registering you will receive: General Instructions, Sailing Instructions, Crew Passes (wristbands), tickets for all meals booked during the week, and a Goodie Bag.

You will be given a crew list form to complete before the start of the Channel Races. This will require the names and emergency contact phone numbers of all your crew, so it may help you to collect this information in advance and have it ready.

Once your crew have received their crew wristbands they will be able to use the facilities and attend the events laid on for the regatta. The wristband will also entitle the holder to the concessionary rate of 50p on the passenger ferry (not the Lower car ferry) between Kingswear and Dartmouth. So register as soon as you can.

The first meeting will be the Skippers' Briefing at the Royal Dart Yacht Club at 19.00 on Friday, followed by the Welcome Reception for all crews at 1930.

#### 4. BRIEFINGS AND CRAB BIENNIAL GENERAL MEETING.

Dartmouth Classic - This will take place on Friday evening at 1900 on the quarterdeck of the RDYC.

Classic Channel Regatta Leg 1 - This will take place on the Monday 10th at 1000 in the Guildhall, Dartmouth (see map)

It will be immediately followed by the CRAB association Biennial General Meeting

## **5. CREW SUPPER, CREAM TEAS, BREAKFASTS and BBQ ON FRIDAY & SUNDAY IN THE RDYC**

A crew supper will be available on Friday Evening at the Royal Dart Yacht Club after the welcome reception and prizegiving. These will be £12.50 (15€) a head – the menus will be emailed out with these instructions. You need to pre-book suppers direct with the club by contacting Julie on 01803-752272 or at: [barsupervisor@royaldart.co.uk](mailto:barsupervisor@royaldart.co.uk). French entrants can choose to book via Daniel Hue at [daniel.hue@orange.fr](mailto:daniel.hue@orange.fr) Numbers are limited, so book early to avoid disappointment. On Sunday afternoon before the prize giving Devon Cream Teas will be served at £5.00 per head and later on in the evening there will be a BBQ at £7.50 per head. The Cream Tea or BBQ cannot be pre-booked, just pay at the time.

## **6. GETTING ASHORE – DINGHIES, WATER TAXIS & FERRIES**

All crew are entitled to a concessionary fare of 50p each way on the Passenger Ferry which runs between Kingswear Railway Station pontoon and Dartmouth town quay - you need to be wearing your wristband to get this concession. Please note this concession is not available on the Lower (car) Ferry which runs from the slip by the yacht club.

Water taxis are operated by the Harbour Authority from 08.00 – 23.00 between Dartmouth, the moorings and Kingswear. Call the water taxi on VHF Ch 69 or tel: 07970 346571. The service is free to entrants wearing wrist bands. Also water taxi Sandpiper (VHF Ch 8 or Tel:07907 528201) is offering the concessionary rate of £1 until 11pm and will run a late night service on Saturday back to the boats after the party for £2.

If you are on a midstream visitors mooring you will need to rely on the water taxis unless you use your own tender. Tenders can be moored on the inside of the Royal Dart YC pontoon (please keep the outside clear) at Kingswear and on the dinghy pontoon just upstream of the 'Boat Float' in Dartmouth. The RDYC will also be operating its own boat "Bravo" at peak times however it will be a requirement that lifejackets are worn on Bravo for insurance reasons. Please note Bravo will only shuttle between the midstream pontoon and the RDYC.

## **7. YACHT CLUBS, SHOWERS, SHOREPOWER & SHORE FACILITIES**

Yacht Clubs - All regatta crews are warmly welcomed as guests of the Royal Dart Yacht Club, who are our hosts for the regatta. The clubhouse, situated on the Kingswear shore has all the usual facilities and the bar will be open during normal hours all weekend. Crews are also welcome at Dartmouth Yacht Club on the Dartmouth Embankment.

Showers – RDYC showers will be open most times from 07.00 until the club closes. There are also showers at Darthaven Marina, Dartmouth Yacht Club and public showers on the Dartmouth Embankment as shown on the plan.

Emergency repairs:

Lee Rogers Rigging 01803 835912 ([lee@leerogersrigging.co.uk](mailto:lee@leerogersrigging.co.uk)). CCR Sponsor.

Sail Repair, Dart Sails 01803 839196 ([info@dartsailsandcovers.co.uk](mailto:info@dartsailsandcovers.co.uk)) CCR Sponsor.

Marine Engineers: Steve Jemmison, New Wave Marine 07761-436585. CCR Sponsor

Darthaven Marina – 07973-280584. CCR Sponsor

Breakfasts – are available Cafe Alf Resco, CCR Sponsor 01803 835880 from 7am and Dart by Mouth 01803 839377 in the Market Square. Restaurants proliferate in Dartmouth and Kingswear from the very good to the very basic. Bacon sandwiches, coffee and tea is also available from 0800-1000 at the RDYC.

Chandlery - Dartmouth Chandlery in Dartmouth 01803 839292 (see map) carries a wide range of chandlery – they are a main sponsor of the regatta, so we encourage you to use them. They can also put sail numbers on dodger panels if ordered in advance.

Fuel & Water - There is a fuel barge in the middle of the river (call sign Dart Crusader on Ch 6 and 07801 798861) which is marked on the plan. The barge is open daily from 0800 – 1800. Note there is no fuel at either of the Marinas. Water is available on the Dartmouth Embankment from the taps marked on the plan, also from the commercial (fishing boat) pontoon, and from the marinas (but you need to get their agreement first).

Victualling – Dartmouth now has a number of good supermarkets for a small town. There are Co-op and a M&S Simply Food stores in the centre of town near the river with Sainsburys and Lidl at the top of town in Townstal (you will need to take the shuttle bus up the hill to these).

Rubbish – There is a refuse skip on a pontoon in mid-river above the fuel barge.

Local Services - please refer to pages 24-26 of the Dart Harbour Handbook (which you will receive at registration) for information on churches, banks, doctors, hospital, police, etc.

Car Parking – there is long-term car parking at the Dartmouth Park & Ride at the top of the hill as you come into Dartmouth by road. Car parking in the town is limited (max 2 hours on street and 4 hours during the day in the



main car park). There is on street parking further up the hill in both Kingswear and Dartmouth in the residential areas.

Public Transport to Dartmouth – there is a railway station at Totnes on the main London Paddington to Penzance line with bus and taxi (fare approx £25) connections to Dartmouth.

[https://ticon-maps-stagecoachbus.s3.amazonaws.com/Timetables/South%20West/x64\\_200915.pdf](https://ticon-maps-stagecoachbus.s3.amazonaws.com/Timetables/South%20West/x64_200915.pdf)

Shorepower is only available on the Town Quay or in the main marinas.

7. **MARKET SQUARE VENUE FOR PARTY & SUPPER**

The Saturday Supper Party will be held in the walled Old Market Square in Dartmouth which is shown on the plan.

8. **PARADE OF SAIL OUT OF DARTMOUTH – Saturday at approx. 10.30**

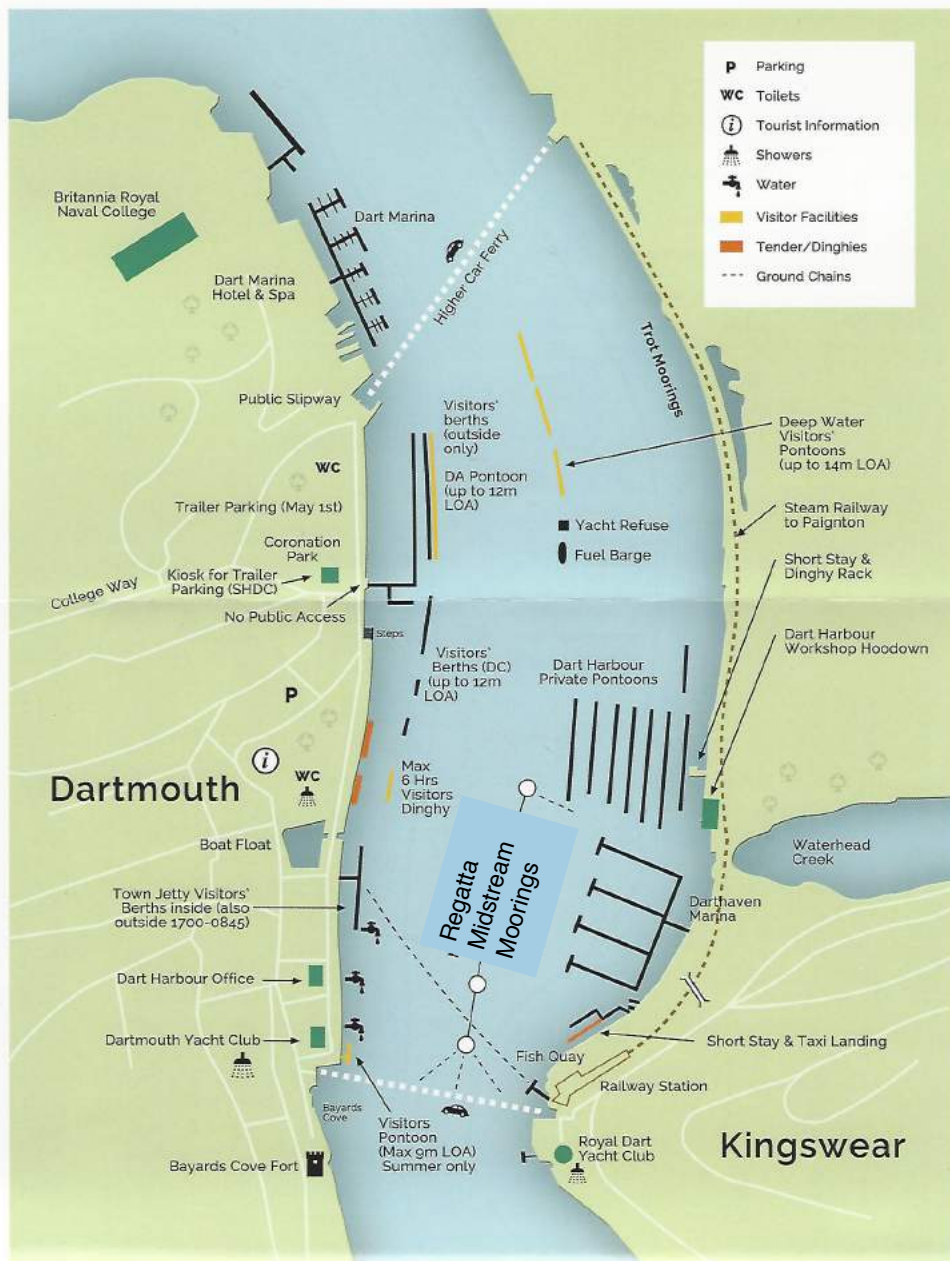
This is intended to be an informal, but orderly, exodus from the river on Saturday morning which is much appreciated by those watching ashore - it is our thank you to the town for their hospitality and support. Please be on board and ready to slip the mooring by 10.15 so you are underway and ready to move by 10.30. There is no set order for the boats, a lead boat will lead the way soon after 10.30, so just find a slot and follow the boat in front.

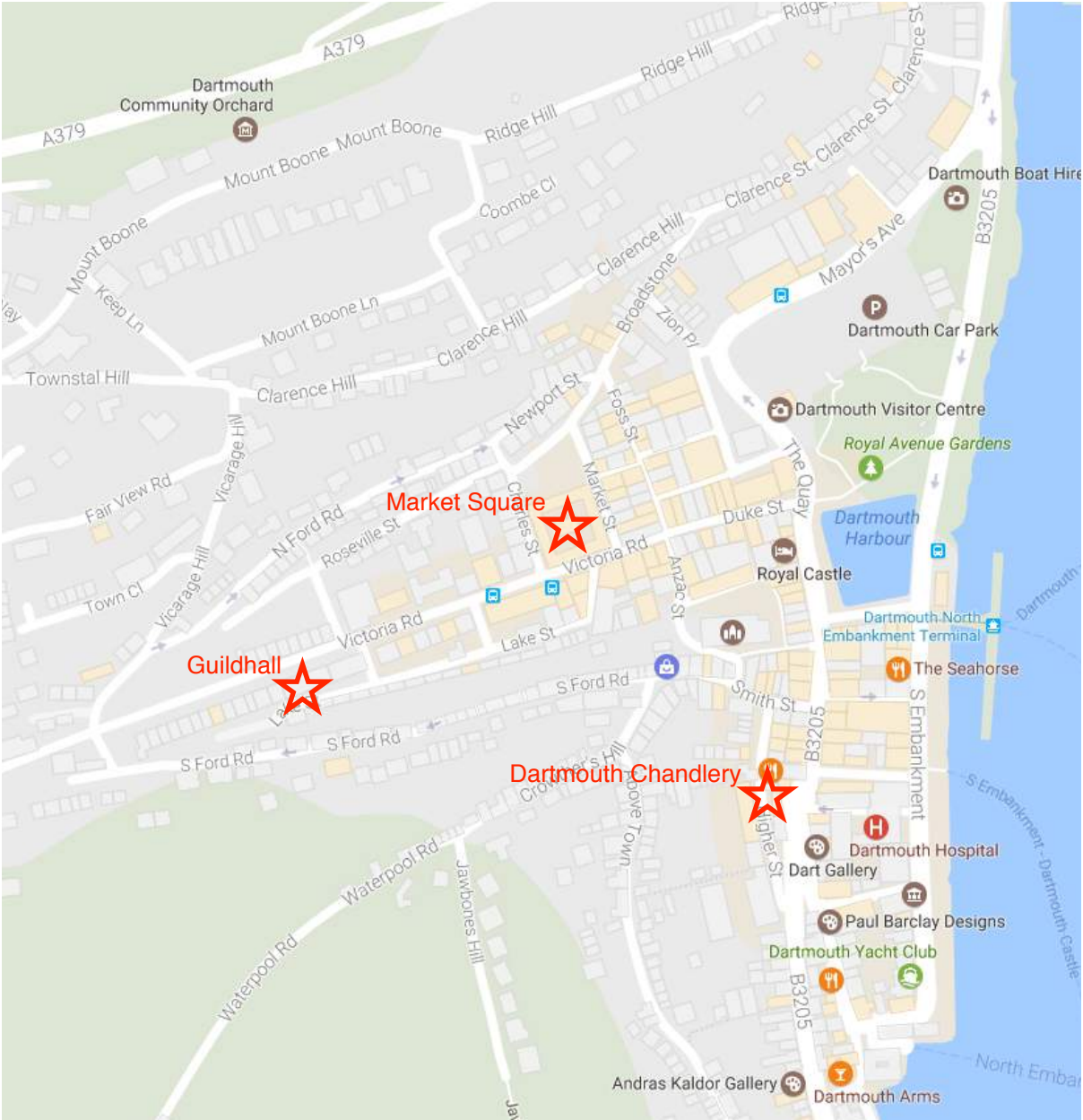
The route for the parade from the regatta trots is first up-river on the east side to a turning mark ( details of this will be given at the Friday evening briefing) positioned in the fairway a little downstream of the Higher Ferry, which is to be left to port. Then proceed downstream keeping towards the Dartmouth shore and then out of the river. Do not cross the path of the Higher Ferry and take care when in the vicinity of the Lower Ferry, it will continue to have right of way so boats may have to round up, stop or alter course to avoid it.

The Harbourmaster has instructed that engines must be kept running on standby and only those sails that allow the boat to maintain full manoeuvrability may be set (so certainly no spinnakers) until boats are downstream of the Lower Ferry. More information will be given at the Friday Briefing.



## Dartmouth Harbour





## **ST PETER PORT, GUERNSEY**

### **1. ARRIVAL & BERTHING**

Boats will be berthed on the visitors pontoons in the main harbour. These are attached to the Shore and have water (but not electricity). Berthing for Tuesday night in Guernsey is free. Customs forms for yachts coming from outside the Channel Islands must be filled in. Some boats may be able to use the inner port but this will be crowded and is tide restricted. As yachts come into the harbour and approach the waiting pontoon they will be met by harbour staff in dory's who will guide yachts to their berths. Please advise the Harbour Staff you are with the Classic Channel Regatta. If you are arriving out of hours then you can go onto the waiting pontoons until harbour staff can allocate you a berth.

The committee boat White Mouse will act as Registration Office and contact point during the stay in Guernsey. Tel +44 7516638751. White Mouse will be open as Regatta Office from 1400-1800 Tuesday 11th for registrations. The briefing for Classic Channel Race leg 2 will be by VHF at 1700 on the 11th.

### **2. REGISTRATIONS**

Boats arriving in Guernsey which have not registered should moor as instructed by Harbour Staff and as soon as possible after 1600 contact the committee boat White Mouse which will act as Registration Office and contact point during the stay in Guernsey.

Tel +44 7516638751. White Mouse will be open as Regatta Office from 1600-1800 Tuesday 11th for registrations. The briefing for Classic Channel Race leg 2 will be by VHF at 1700 on the 11th.

### **3. FACILITIES**

There are extensive facilities in Guernsey including repair facilities (mechanical and sail). Boatworks (<http://boatworksguernsey.com>) based next to the fuel berth have a wide range of services. Anything brought in Guernsey may be subject to import duties in the EU.

### **4. SHOWERS & FUEL**

Showers are on Albert Pier to the south of the entrance to Victoria Marina. Fuel is available from the fuelling berth at Boatworks + on Castle Pier

### **5. SHOPPING**

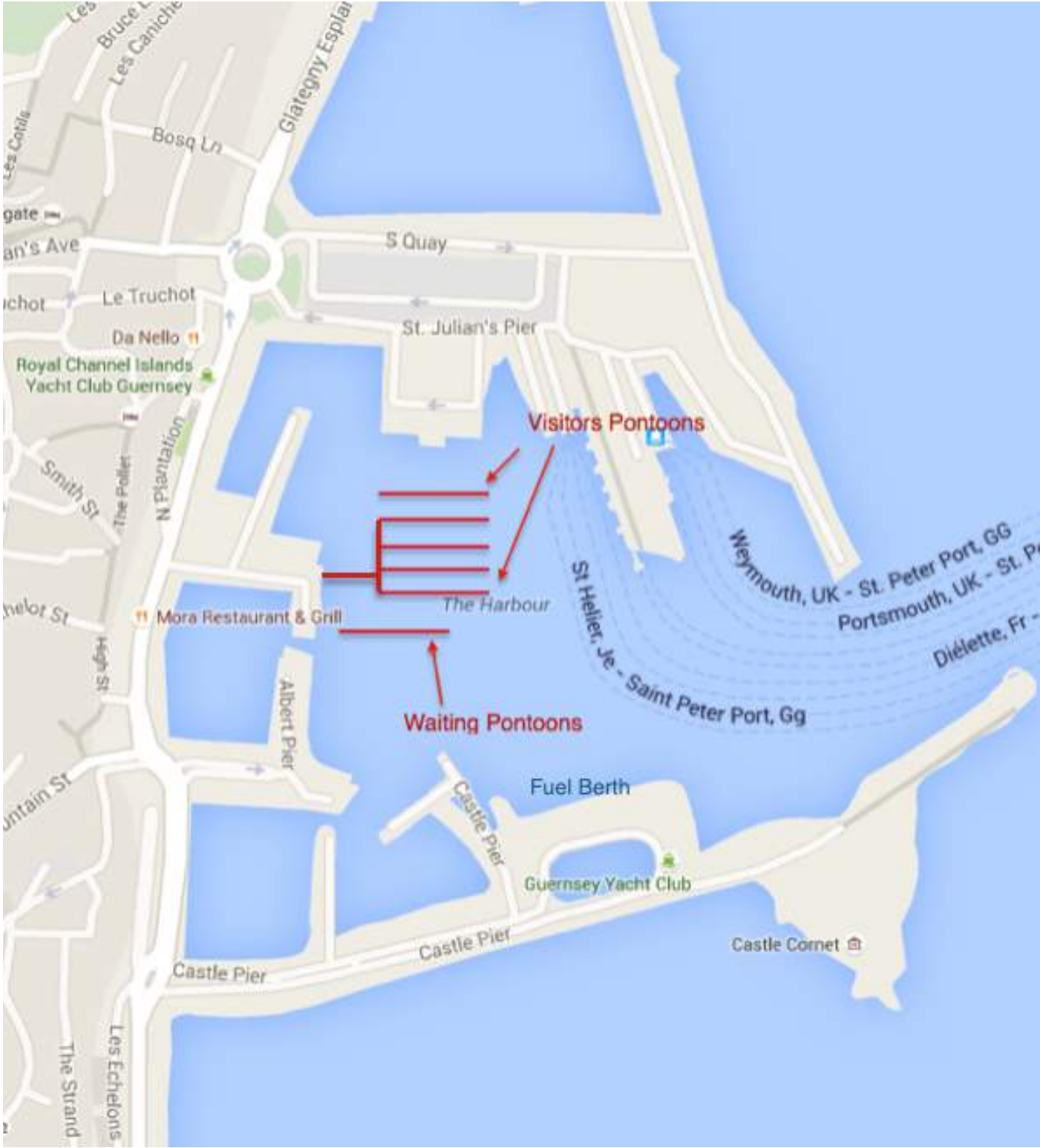
There is extensive shopping in St Peter Port with supermarkets on the front or on the main street.

### **6. GUERNSEY YACHT CLUB**

Guernsey YC is our host club while in St Peter Port. The clubhouse is at the eastern end of Castle Pier, by the entrance to Castle Cornet. To get there from the visitors pontoons you can either dinghy across or walk round (which take about 20 minutes).

### **7. GUERNSEY CONNECTIONS**

There are extensive ferry and air connection to Guernsey both from the UK and France.



## **Paimpol and Lezadriuex .**

### **General Arrival Instructions**

Due to the number of yachts we need to get into Paimpol on Wednesday evening and Friday morning, plus the requirement for predetermined berthing slots in both Paimpol and Lezardriuex, we will need to bring boats into both these harbour in a set order.

This will be done by dividing the fleet into 3 pre-designated groups and each group will taken in to harbour in convoy.

The three waiting areas are:

For Paimpol - after the Race from Guernsey - Three defined areas to the West of the Le Jument finish line.

For Lézardrieux - after the Ile de Brehat Race and Picnic on Thursday Afternoon - An area to the North of Loguivy which is also the suggested area for the Fleet Picnic.

For Paimpol on Friday Morning (Bastille Day) - boats will leave Lézardrieux and re-group in the waiting areas near to the Le Jument Beacon prior to leaving in group order for the parade of sail in to Paimpol.

Full detailed instruction will be given to competitors in Guernsey, or for boats registering in Paimpol, in Paimpol before the Brehat Race.

It is essential that these instructions are followed.



## PAIMPOL

### 1. TIDE & LOCK OPENING TIMES.

All Times French Summer Time ie: UT + 2 hours. The Lock is open from HW - 2h30m to HW + 2h20m. The sill is 4.84m above Chart Datum.

When the height of the Tide exceeds 9.8m there is a period of 'free flow' in the lock (both gates open) for approximately half an hour before High Water. This provides a good opportunity to get a large number of boats through the lock quickly.

The lock can take approximately 20 boats per locking. Each locking cycle takes about 20 minutes to complete. It follows that, without a 'free flow' period, it will take a minimum of 1 hour to lock through 60 boats therefore please make maximum use of the free flow times. Failure to lock out in time will score you "DNS" as the start of either the Round Brehat Race will not be delayed.

Paimpol Times of High Water, Tide Heights and Lock Opening Times						
Date	High Water		Lock Opens	Free Flow times		Lock Closes
	Time	Height		From	To	
Wed July 12th	09h50	10m02	07h20	Approx 09h05	09h50	12h20
	22h04	10m22	19h34	Approx 20h50	22h04	00h34
Thurs July 13th	10h26	9m92	07h56	Approx. 09h26	10h26	12h56
	22h40	10m04	20h10	21h50	22h40	01h10
Fri July 14th	11h04	9m70	08h34	Approx. 10h04	11h04	13h34
	23h19	9m74	20h49	Approx 22h45	23h19	01h49
For Regatta purposes only, the water level in the dock will be adjusted to allow a free flow of about 1 hour						

In the event of heavy weather, boats can seek refuge in the Trieux river or at St Quay Portrieux while awaiting suitable conditions to enter Paimpol. The approach to Paimpol is well sheltered from the west, so only a strong NE to SE wind will cause a problem. If that happens it may obviously be necessary to amend the berthing instructions. It is vitally important that during the day on Wednesday after arrival that competitors continue to monitor their VHF's for announcements. The same is a required after the Round Brehat Race and before departure on Friday morning in Lezardriux

### 2. BERTHING, REGATTA OFFICE & SHOWERS.

The regatta fleet will be berthed in Bassin No1 (the south one) as directed by the harbour staff.

Water and electricity are on the pontoons and free. It is very important that on arrival in Paimpol you follow the instructions of the Harbour Staff and CCR personnel. On both days we have a lot of yachts to berth in a short space of time and a general melee will insure it takes much longer (which will cut down on drinking time considerably).

Please note that the briefings for the Round Brehat Race will take place by VHF at 0800 on Thursday 13th July. This changes the instructions in the NOR.

Fuel & Gas: Diesel is available from a pump just inside the lock. It will not be possible to go to this fueling berth when entering the port as it will slow down and impede the entry of the rest of the fleet. Boats requiring fuel on

Thursday morning will need to clear their berth in Bassin 1 in good time to take on fuel well before the start of the free-flow period for departure. Space and time is limited for re-fueling on Thursday morning, so skippers are requested to avoid the need to re-fuel then. Boats requiring fuel after entering the port on Friday should leave taking on fuel until they depart on Saturday or later.

Gas and general chandlery is available from Dauphin Nautic, (South Side of Harbour) +33(0)2 96 22 01 72 and Intermarché supermarket (500 metres from port).

Victualling There are many food stores in the town close to the Bassin N°1. Bigger stores are:

- Le Hangar at approx. 700m Rue de Penvern, where you can find fresh products made or grown in Brittany, and Intermarché in front of the Railway Station approx. 500m from the harbour.

#### **Showers & Washing Facilities:**

These are free (and excellent) in the Maison des Plaisanciers (the Capitainerie). Access is open during the day and by swipe card at night. Swipe cards will be issued to each boat on arrival – one per smaller boats, 2 per boats with more crew.

Weather forecasts: Meteo-France on the monitor in the entrance to Maison des Plaisanciers.

The Regatta Office is upstairs at the Maison des Plaisanciers. (See Plan)

Office Opening Hours:

Thursday 13th

0800-0900

Friday 14th

0900-1600

WiFi: The whole harbour area has WiFi.

Links to Paimpol by those not coming by boat are good. Ferries regularly go into St Malo from the UK and there is a daily sailing Plymouth-Roscoff. Train connections are easy from either Paris and Brest directions with a TGV connection in Guingamp. (see <https://www.horairetrain.net/horaires-guingamp-paimpol.html> for times)

The Museum of the Sea in Paimpol is highly recommended and is free to competitors wearing a regatta wristband. <http://www.museumerpaimpol.com> (see Map)



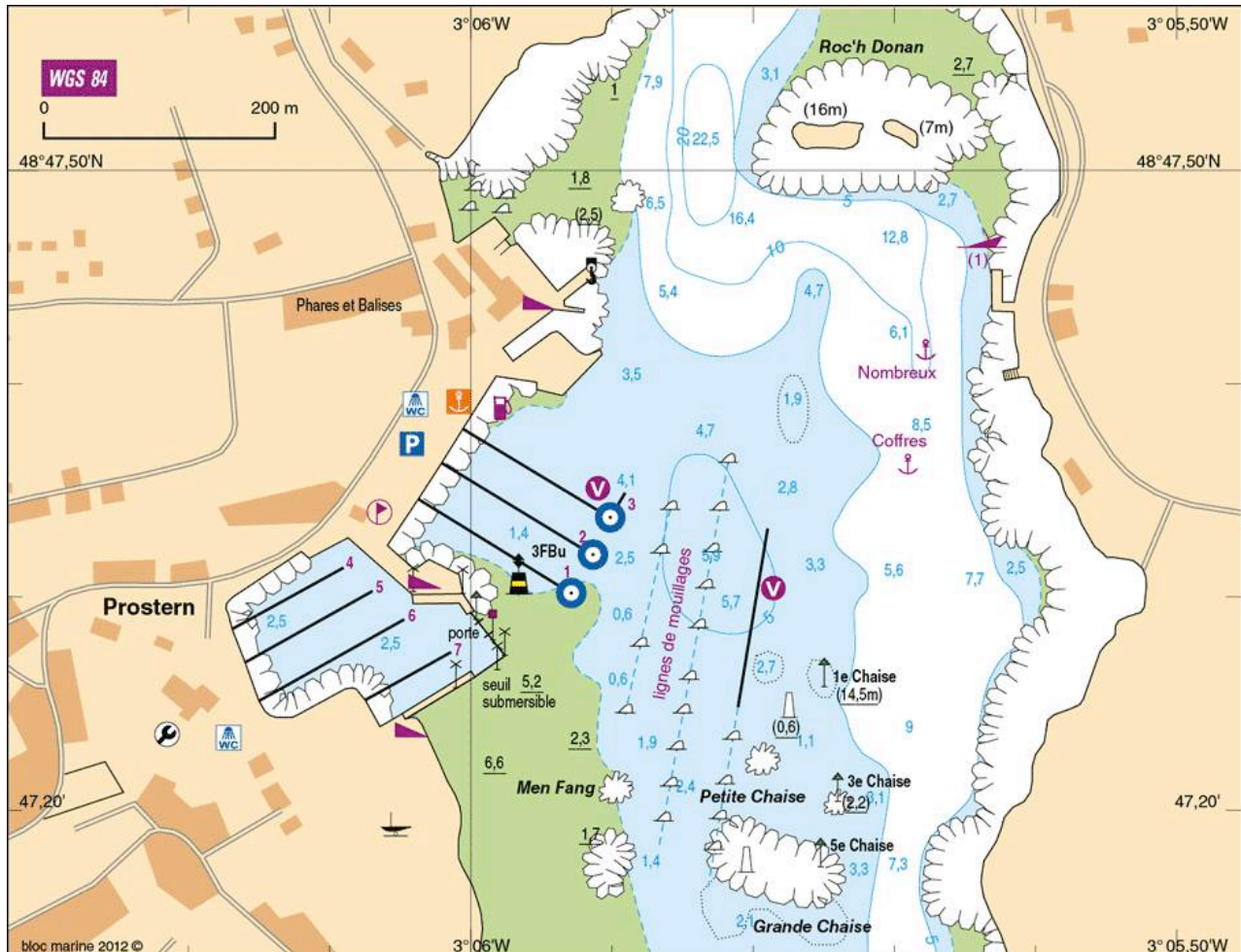
[illegible]

Restaurants Sponsors						
Numéro sur plan	Nom et adresse	Adresse mail N° de téléphone Type de restaurant	Nb de services par repas	Capacité	Dernier service déjeuner	Dernier service dîner
1	La Marne 30 rue de la Marne	hoteldelamarne@orange.fr 02 96 16 33 41 Traditionnel - Gastronomie	1	40	13h30	21h00
2	La Vieille Tour 13 rue de l'Eglise	lavielletour@orange.fr 02 96 20 83 18 Traditionnel - Gastronomie	1	40	13h30	21h00
3	Le Penn Ty 20 rue des Huit Patriotes	02 96 55 11 41 Crêperie	«En Continu» All day long	30		22h00
4	Le 18 18 rue des Huit Patriotes	le18paimpol@yahoo.fr 09 72 82 82 13 Traditionnel		50	13h30	22h00
5	Crêperie les Alizés 14 rue des Huit Patriotes	02 96 22 03 90 Crêperie - Grill	«En Continu» All day long	100		21h00
6	Ty Krampouz (Morel) 11 Place du Martray	02 96 20 86 34 Crêperie - Brasserie			14h00	22h00
7	Le Riva 33 quai Morand	contact@restaurantlrivera.com 02 96 20 43 08 Traditionnel - Pizzeria	2	100	14h30	23h00
8	L'Escale 27 quai Morand	02 96 20 81 88 Crêperie - Mouleries (mussels)				23h00
9	Le Neptune 23 quai Morand	02 96 20 53 03 Brasserie - Traditionnel	«1 à 2»	150	14h30	21h30
10	Hôtel K'loys - Tonton Guy 21 quai Morand	hotelkloys@orange.fr 02 96 20 40 01 Traditionnel-Crêperie-Brasserie	2	80	15h00	22h00
11	L'Islandais 19 quai Morand	02 96 20 93 80 Traditionnel-Crêperie-Brasserie	«En Continu» All day long	120		23h00
12	Restaurant du Port 17 Quai Morand	restaurantduport@wanadoo.fr 02 96 20 82 76 Traditionnel	2	70		21h30
13	Quai Ouest 11 quai Morand	michele.bourver@sfr.fr 02 96 20 72 30 Traditionnel		60	14h30	22h00
14	Les Chalutiers 5 quai Morand	02 96 20 82 15 Brasserie	«En Continu» All day long	120		22h30
15	Glacier Adam Place de la République	02 96 22 29 19 Glacier/ Salon de Thé - (Ice ceam/Tee room)	«En Continu» All day long		9h30 / 23h00	
16	La Saladerie 6 bis quai Duguay Trouin	lemonpaimpol@orange.fr 02 96 20 58 41 Salades-Tartines-Sandw-Paninis	2	20		22h00
17	Les P'tits Mousses 12 quai Duguay Trouin	laetitialag@orange.fr 02 96 20 42 09 Traditionnel - Crêperie - Pizzéria	«En Continu» All day long	110		22h00
18	Le Terre-Neuvas 16 quai Duguay Trouin	gaetanebrault@orange.fr 02 96 55 14 14 Traditionnel		80		23h30
19	Aux vieux gréements 10 quai de Kernoa	benjamincharpentier@neuf.fr 02 96 16 17 63 / 06 04 40 83 77 Crêperie	2	70		21h30
20	Le Paimpolais 10 quai de Kernoa	contact@nicodelices.fr 02 96 20 81 08 Traditionnel	2	60		21h30
21	La Cabane sur le Quai quai de Kernoa	kerandre22@gmail.com 02 96 55 58 82 Traditionnel - Bar à tapas	«En Continu» All day long	50		23h00
22	La Cabane 17 rue du Billiec	kerandre22@gmail.com 02 96 55 08 91 / 06 81 23 05 15 Fish & Chips - Bar à huîtres	«En Continu» All day long	50		23h00
23	L'Ecluse Quai Armand Dayot	ecluse.paimpol@orange.fr 02 96 55 03 38 Traditionnel	2	140		22h30
Bars Sponsors						
A	Le Cargo	15 rue des 8 Patriotes	02 96 20 72 46	16h00 / 02h00		
B	Le Pub	3 rue des Islandais	02 96 20 82 31	23h00 / 05h00		
C	Le Corto Maltes	11 rue du Quai	02 96 22 05 76	jusqu'à (up to) 02h00		
D	L'Epoque	3 quai Morand	02 96 20 82 14	06h00 / 02h00		
E	La Paillette	10 quai Duguay Trouin		10h00 / 02h00		
	Intermarché	On the 14th July : open from 8.30 am to 1.00 pm				
		Delivery on board - Livraison à bord				

## Lézardrieux

### 1. ARRIVAL & BERTHING

Boats will be berthed on the main pontoons in Lézardrieux and also on the mid river pontoons, buoys and Paimpol side pontoon. A water taxi service will operate for Thursday evening. There will be RIBs to guide and help boats into their designated berths. It is vitally important that boats await instructions and help as the tides running in the river at this point are strong.



### 2. FACILITIES

There are shower and toilet facilities on the quay at Lézardrieux. Fuel is available but due to the limited time competitors are advised to fuel in Paimpol if possible.

### 3. WATER TAXI's

There will be a designated water taxi to get those on the mid river moorings and the jetty on the Paimpol side ashore and back onboard. There are very fast flowing tides in this area and Competitors are advised to use the Harbour provided launch if they are in any doubt about their ability to use any dinghy they may have onboard.

### 4. SHOPPING and RESTAURANTS

There is a supermarket in Lézardrieux (See map). There is a bakery and butchers etc in the Place Du Centre. There are limited Restaurants in Lézardrieux.

Anybody wishing to eat ashore has 3 options.

- 1) The Bar Du Yacht Le Port, will be able to serve 200 and will be making tickets available in Paimpol on Wednesday the 12th.
- 2) Book a restaurant in Lézardrieux (See Map).
- 3) Take a meal ashore prepared onboard in the Marquee after the drinks/prizegiving has taken place.

### 5. Lézardrieux CONNECTIONS

Lézardrieux is about 3 miles by road from Paimpol. There is no train station but there is a bus link to Guingamp (TGV Connection Brest-Paris mainline)



# CLASSIC CHANNEL REGATTA

## Lézardrieux - Restaurants & Bars - Sponsors



Número sur plan	Nom et adresse	Adresse mail N° de téléphone Type de restaurant	Nb de services par repas	Capacité	Dernier service déjeuner	Dernier service dîner
1	Bar du Yacht Le Port	yachtclub22@orange.fr 02 96 20 10 39 Traditionnel	2	200		23h30
2	Auberge du Trieux 1 Impasse du Fou	contact@auberge-du-trieux.com 02 96 20 10 70 (reservation on Internet) Semi Gastro (Michelin 2017)	1	50		21h30
3	San Angelo 6 rue du 8 mai	angelique.zullo@aol.fr 02 96 22 17 13 Pizzeria		40		21h30
4	Le Moulin de la Galette 2 allée des Marronniers	02 96 20 42 09 Crêperie	1	55 + terrasse	13h30	21h30
Bars Sponsors						
1	Le Bar du Yacht					
2	National Muscadets					
	Utile	Ouvert de 8h30 à 20h00 / Open 8.30 am to 8 pm (included 14th July)				
		Can deliver on board				

# CLASSIC CHANNEL REGATTA 2017 - PARTNERS

## PLATINUM

# LEWMAR®

## GOLD



## SILVER



## COPPER



## SUPPORTING AUTHORITIES



## BRONZE PARTNERS

- Ac'sion Pêche
- Armor Gréement
- Baltic Wharf Boatyard
- Baltic Wharf Repairs
- Blueriver Cottages
- Bolee de Paimpol
- Bretagne Marine
- Cafe Alf Resco
- Comptoir de la Mer
- Cras Nautique

- Dart Sails
- Darthaven Marina
- Dartmouth Boating Centre
- Dauphin Nautic
- Devon Wooden Boats Ltd
- Gifts for Gentlemen
- Gilles Conrath
- Hercules Engineering
- John Moody Timber

- Lee Rogers Rigging
- Marchand Petit
- New Wave Marine
- Paul Barclay
- Sharpham Wine & Cheese
- Up & Away Vision
- Utile Lézardrieux
- Voilerie Paimpol
- Wild Food Devon
- Wollen Michelmores